

SCHOOLCRAFT COLLEGE

ANNUAL REPORT

2023-2024







pg. **10**



pg. **18**



- 4** **From the Office of the President**
SEIZE THE OPPORTUNITY
Easier than ever to go to college
- 5** **Schoolcraft College**
WHO WE ARE
Our mission, vision, values and boards
- 6** **Financial Report**
INVESTING IN EDUCATION REMAINS PRIORITY
Community College Guarantee, Michigan Reconnect makes college attainable
- 7** **Campus Comfort Companions**
NEW COMFORT DOGS LEND A PAW ON CAMPUS
Schoolcraft College goes to the dogs
- 8** **Academics**
NURTURING STUDENTS' POTENTIAL
Academics preparing students
- 9** **Dual Enrollment**
DUAL ENROLLMENT SEES MORE STUDENTS
Dual enrollment sees increase thanks to new program
- 10** **Vision. Talent. Technology.**
VISTATECH CENTER OFFERS EXPERIENCES LIKE NOWHERE ELSE
A brand-new, visionary experience
- 12** **Astonishing Alums**
CRAFTING A NEW FUTURE
After a career in accounting, Eric Sokoloski found himself wanting more
- 14** **Astonishing Alums**
REMEMBERING THE FIRST CLASS
Meet a Schoolcraft trailblazer
- 15** **New Developments**
NEW SOCCER FIELDS BENEFIT THE COMMUNITY
New soccer fields open on campus
- 16** **Personal & Professional Learning**
LIFELONG LEARNING ABOUNDS
Education for a lifetime
- 17** **In the Community**
A PLACE FOR EVERYONE
Bringing people together
- 18** **Athletics**
OCELOTS TAKE TO THE ICE
Ocelots celebrate new beginnings, championships
- 19** **Foundation**
GIVING BACK IS OUR PASSION
Vision 2025 in the homestretch



SEIZE THE OPPORTUNITY

Never has there been an easier time to head to school and earn a degree, especially from Schoolcraft College. A plethora of state programs to encourage training to better the workforce now makes what may have been just a dream into a reality.

Perhaps no bigger opportunity is for our recent high school graduates announced earlier this year: the Michigan Community College Guarantee. This program allows students who graduated high school in the last year the opportunity to attend their local community college and earn their associate degree without paying any tuition out-of-pocket. This program is a game-changer and is one we encourage students to take advantage of; having a post-secondary degree leads to better-paying jobs.

Not a recent high school graduate? You still may attend Schoolcraft College at no cost. Enter the Michigan Reconnect program, another state initiative that has provided more than 150,000 people statewide the chance to earn a certificate or associate degree since launching in 2021. Here at Schoolcraft College, we pride ourselves on welcoming Reconnect students and making their experience here a great one. From our supportive faculty to convenient class times to our new WeConnect mentorship program, we have our Reconnect students covered.

It's not only a great time for the community to head to Schoolcraft College, but it's also been a great time for Schoolcraft College to connect with the community. It's important to realize success is never reached in a vacuum: connecting with the community through various summer festivals, our annual Spooktacular Halloween event and through our students who go out into the world and make a difference, the imprint of Schoolcraft College is found across the region and continues to grow.

That collaborative feeling comes at an important time in our College's history. Schoolcraft College is the most diverse community college in the state of Michigan, according to the Community College Review.



This achievement is one that makes Schoolcraft a better place: by being an inviting campus, we can help all of our students achieve their goals. Our diversity is something to be celebrated, and is something I've pushed since the day I took over as president.

We've made a lot of progress over the last year, something you'll read more about as you flip through this report. We're proud of the efforts we've made and look forward to the future as we continue to grow. I look forward to working together with the community and making our bonds even tighter in the next year.

Glenn R. Cerny, Ed.D.
President

MISSION

Schoolcraft is a comprehensive, open-door, community-based college. The mission of the College is to provide a transformational learning experience designed to increase the capacity of individuals and groups to achieve intellectual, social, and economic goals.

VISION

The College wishes to be a first-choice provider of educational services, a competent organization, functioning with integrity, behaving strategically, and providing value beyond expectations.

VALUES

We recognize that students are our reason for existence and that student success is paramount to our mission.

We pledge to follow ethical practices in the classroom, boardroom, business operations, and all other areas of the College.

We value diversity in our students, staff, and programming.

We are committed to having a positive intellectual, social, and economic impact on the communities we serve.

We strive to achieve leadership in academics, management practices, employee relations, and institutional innovation.

We strive to maintain a supportive, cordial, and aesthetically pleasing environment for our students, staff, and community.

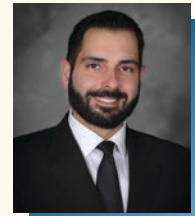
We encourage lifelong learning for our students and staff by providing the most current programs, utilizing the most effective instructional delivery methods.

We believe that higher education should be accessible to the greatest number of our constituents.

BOARD OF TRUSTEES



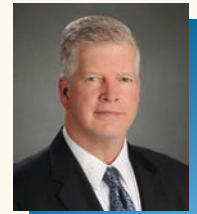
CAROL M. STROM
Chair



BRETT M. GIERAK
Vice Chair



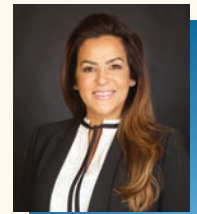
BRIAN D. BRODERICK
Secretary



TERRY GILLIGAN
Treasurer



DILLON E. BREEN
Trustee



ANGELA JAAFAR
Trustee



CANDY R. LITTLE
Trustee

SCHOOLCRAFT COLLEGE FOUNDATION BOARD OF GOVERNORS

OFFICERS

Lynn Coburn, President
Marina L. Shoemaker, Vice President
Robin L. Whitfield, J.D., Treasurer
Clyde Rivard, Secretary
Lois McEntyre, Past President

MEMBERS

Charles Dardas
Melanie Duquesnel
David Groth
Jeff Hamilton, PE
Kim Keaton Williams

Mark Knoth
Kelli Lewton C.E.C.
Helen McGrath
Ram Ramanujam
Alec Thomson, PhD
John Walsh, JD

EMERITUS MEMBERS

Gary Gabel, Ed.D.
Thomas Marek
Charles McIlhargey
John N. Santeiu, Jr.

EX-OFFICIO

Brian Broderick
Glenn Cerny, Ed.D.
Dawn Dyer Magretta, CFRE

INVESTING IN EDUCATION REMAINS PRIORITY

While the cost of college has gone up throughout the years, there are plenty of opportunities offered through the State of Michigan for new students to enroll at Schoolcraft College tuition-free.

The newest program, the Community College Guarantee, provides a scholarship to high school graduates that started with the class of 2023 that covers the cost of in-district tuition, as well as an additional \$1,000/year for Pell-eligible students.

This program will allow students the ability to earn an associate degree or certificate with no tuition costs to them.

Several caveats exist for students to take advantage of the program: they must enroll full-time (12+ credits), be a resident of Michigan since July 1 of the previous year and continue living in Michigan while attending school. All interested students need to do is complete their Free Application for Federal Student Aid (FAFSA) and list Schoolcraft College as their top choice.

“This program is revolutionary for today’s high school graduates,” said Dr. Glenn Cerny, President of

Schoolcraft College. “This program opens new opportunities for recent graduates and takes away the question of ‘Can I afford to go to college?’ With the Community College Guarantee, that answer is ‘yes.’”

Older student? Try Michigan Reconnect

For those looking to go to school who have been out of high school for a few years, the state also offers the Michigan Reconnect program, a scholarship program for adults without a college credential. The program is for those 25 and older without a college degree, though the state had temporarily dropped the minimum age to 21 for those who enrolled by fall 2024.

This scholarship enables those seeking to advance or change their careers the opportunity to do so. The program aims to assist Gov. Gretchen Whitmer’s Sixty by 30 goal, which calls for 60% of the state’s population to possess a post-secondary degree or certificate by 2030.

Schoolcraft College has seen a big jump in Reconnect scholars attending college. Since the program launched in 2021, nearly 4,000

students at Schoolcraft College have utilized Reconnect funds. About 14% of students in the 2023-2024 school year were Reconnect students; that figure was only 8% in 2021-2022 and 9% in 2022-2023.

Since the program began, more than 400 Reconnect students have graduated with an associate degree, certificate or skill certificate. One of those students is Melissa Converse, who served as a student marshal at commencement earlier this year.

After moving to Michigan several years ago, she looked at school options and decided to enroll at Schoolcraft College. She said Michigan Reconnect was the perfect opportunity to earn her degree and she wanted to make sure she did it the right way.

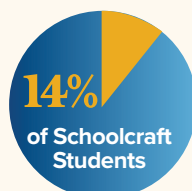
After earning her associate degree earlier this year, Converse has enrolled to continue her education at the University of Detroit-Mercy.

“If I’m using the state’s money to go to school, I want to do right by them,” Converse said. “So, if I ever get the chance to shake Gov. Gretchen Whitmer’s hand, I know that I can do it with a clear conscience that I did not waste the state’s money.”

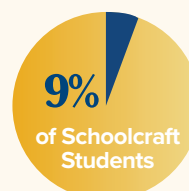
Reconnect at Schoolcraft

400+

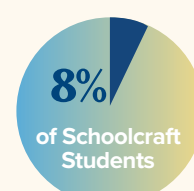
Reconnect students have graduated with an associate degree, certificate or skill certificate from Schoolcraft College.



2023-2024



2022-2023



2021-2022

NEW COMFORT DOGS LEND A PAW ON CAMPUS

Schoolcraft College has five new unique employees working to alleviate stress across campus.

These aren't your typical workers: they just happen to be dogs. Dubbed the Campus Comfort Companions, these new helpers are comfort dogs, designed to serve several roles at the College, including improving mental health and increasing compassion.

These five dogs – which were brought to campus with the financial help of the Schoolcraft College Foundation – were born in Canada in early 2024 and began their training immediately. They then moved in with their handlers, who are all members of the Schoolcraft College Police Department. From there, the pups have received training and continue to learn how to best serve the campus community.

A naming contest took place earlier this year, with hundreds in the community casting votes for the pups. Scout, Mocha, Teddy, Starla and Copper were the winning names.

The dogs will receive therapy dog training and certification once they reach their first birthdays. Once that is completed, they will fully integrate on campus, visiting special events and serving as representatives of the College.

“These new comfort dogs will serve a vital role here at Schoolcraft College. Their presence will bring smiles to faces and help our students and staff take a moment to simply recharge and rejuvenate with fun-loving energy that only a dog can bring,” said Dr. Glenn Cerny, President of Schoolcraft College. “We’re looking forward to having them on campus full-time and enhancing the lives of our students, faculty and staff.”

The new pups continue the College’s mission to create a welcoming campus for students, faculty and staff. Fulfilling part of the College’s Strategic Plan, these new comfort companions will connect not just with the campus but with the greater community as well. Learn more about the dogs and keep up with their adventures by following their dedicated Instagram page, @sc_pups.

Meet the pups



SCOUT

BREED

Silver Labrador Retriever • Female

BIRTHDAY

January 20, 2024

CERTIFICATION

Certified Comfort Companion & AKC Canine Good Citizen (January 2025)

COPPER

BREED

Chocolate Labrador Retriever • Female

BIRTHDAY

February 9, 2024

CERTIFICATION

Certified Comfort Companion & AKC Canine Good Citizen (January 2025)



MOCHA

BREED

Chocolate Labrador Retriever • Female

BIRTHDAY

February 9, 2024

CERTIFICATION

Certified Comfort Companion & AKC Canine Good Citizen (January 2025)

TEDDY

BREED

Chocolate Labrador Retriever • Male

BIRTHDAY

January 30, 2024

CERTIFICATION

Certified Comfort Companion & AKC Canine Good Citizen (January 2025)



STARLA

BREED

Chocolate Labrador Retriever • Female

BIRTHDAY

January 30, 2024

CERTIFICATION

Certified Comfort Companion & AKC Canine Good Citizen (January 2025)

NURTURING STUDENTS' POTENTIAL

Academics is at the heart of all we do here at Schoolcraft College. We are all about preparing our students for their next journey. With a wide range of degree tracks, our academic offerings provide opportunities for students looking for all kinds of pathways.

We continue to see growth in enrollment after the declines of the COVID-19 pandemic, which includes increased enrollment in programs such as Radiologic Technology, Surgical Technology, Elementary Alternate Route to Teacher K-5 (ARC), Firefighter Technology, Cybersecurity and more.

In the past year, the College has made significant progress to improve the academic success of its students, including redesigning support for our math and English entry-level courses. Previously, students would enroll in below college level courses if they needed additional support before taking in 100-level courses. Now, the College has adopted a corequisite model, allowing students to enroll in a support course and the 100-level course at the same time, allowing them to work through the challenges they may face while taking the course. This strategy aims to increase student completion of college level



courses and decrease the stop-out rate (rate of students who leave school and do not return within two years) among students.

Also, integrated into several degrees is the Michigan Transfer Agreement (MTA), an endorsement that fulfills a portion of the lower-division general education requirements at most four-year Michigan colleges and universities. Now, students that earn an Associate of Science (AS) or Associate of Arts (AA) degree will also receive an MTA endorsement as a part of their degree requirements. Having the MTA as a part of these popular degree programs will ease the transfer process for those students enrolling at a four-year institution and allow them to complete a bachelor's degree.

Students looking to complete their Bachelor of Science in Nursing (BSN) degree also have a new pathway aimed at making their degree completion easier. Schoolcraft College and Oakland University signed an agreement this past year to create a bridge program for students to earn their Associate Degree in Nursing at Schoolcraft before seamlessly transferring to Oakland University to complete their BSN. Such a program aims



at making a BSN attainable in a reasonable amount of time for a reasonable cost.

Classes are crucial to learning, but experiences are important to our students' development as well. Students have opportunities to explore internships and apprenticeships and apply the skills learned on campus and use them to benefit the community. The Center for Experiential Learning houses a number of Schoolcraft College's signature programs including the Schoolcraft Scholars Honors Program, Service Learning & Civic Engagement, STEAMz, the International Institute, Social Impact Fellows and the University of Michigan's LSA Transfer Bridges Program. From fellowships to service-learning projects, students are immersed in transformative, high-impact academic experiences, giving them exposure to the skills and abilities necessary to contribute to our global community at Schoolcraft College and beyond.

"Our academics continue to rigorously challenge our students while preparing them for their next phase," said Stacy Whiddon, Chief Academic Officer. "With a wide range of programs, articulation agreements and transfer pathways, our students feel ready for their next steps after they attend Schoolcraft College."

Dual Enrollment Sees More Students

Dual enrollment is a program where high school students enroll in college courses and receive both high school and college credit. Schoolcraft College is leading the way by providing this valuable advantage for high school students to begin college and finish high school courses simultaneously, often without cost to their families. In fact, the program is growing each semester, with over 755 students from area schools participating. Students can take courses leading to a Schoolcraft degree or certificate and/or take courses that will transfer to another college or university.

Thanks to a \$1.2 million appropriation from the state last year, Schoolcraft College is able to cover costs for students from our resident school districts, which include Clarenceville, Livonia, Northville, Plymouth-Canton, Garden City and Novi. Additionally, students

from other school districts and private schools are participating in the program.

"Dual enrollment is a great opportunity for high school students to begin their college experience, while in high school, and complete their high school requirements while they do it. And most importantly, they do this at no cost to the families," said Aaron Baughman, Assistant Superintendent of Instructional Services, Northville Public Schools, a district that sends dozens of its students to Schoolcraft for dual enrollment. "For some students, dual enrollment is a head start, for others it is a way forward. No matter how you look at it, it is win-win for everyone involved and we encourage parents and students to seriously consider taking at least a few courses at Schoolcraft during their high school years."

VISTATECH CENTER OFFERS EXPERIENCES LIKE NOWHERE ELSE

Walking into the Vistatech Center, one would be forgiven for not recognizing it.

The new look for the center, which reopened last fall after 18 months of renovations, has reinvented how the space can serve students and the community.

“There is nothing like the reimagined Vistatech Center anywhere in the region. What began as a simple vision of transforming the building has become an electric center always full of activity,” said Dr. Glenn Cerny, President of Schoolcraft College. “The new Vistatech 2.0 offers amenities not offered anywhere else not only in metro Detroit but across all of Michigan.”

The Collaborative Learning Studio (CLS) has revolutionized how classes and presentations are made across campus, especially when utilizing the demonstration kitchen. Conference & Event Services, which is responsible for booking reservations in the Vistatech Center, has had 47 requests to use the CLS, including inquiries from groups such as the Livonia Westland Chamber of Commerce and Consultech Services. Rentals have taken place with



campuswide groups such as the Office of the President, the Schoolcraft College Foundation and Schoolcraft Retirees, as well as external organizations such as Detroit Drive Degrees Community College Collaborative, Auch Construction, and Trinity Health Michigan Market.

The space has cooking surfaces, ovens, refrigerators and a multi-camera presentation system to showcase presenters’ handiwork. Personal & Professional Learning

has hosted many highly popular demonstration classes in the CLS, accounting for over 800 students from the community to attend in the past year.

“It’s an exciting time to be a culinary arts PPL student. With the CLS now open, our students are able to learn in an updated environment that truly enriches their experience,” said Dr. Jodie Beckley, former director of PPL. “This past year has been a game-changer for our students.”

By the Numbers

138

Number of overall reservations.

185

Number of days booked within all reservations.

816

Number of PPL students who took classes in the CLS the past year.



In addition to its grand opening in Sept. 2023, another grand opening aimed at clients took place in January 2024 to showcase the space. This event – complete with a full winter theme – knocked guests off their feet with the offerings.

“The Town Square has been a great and welcome addition as it allows guests using the auditorium to eat and network or students to grab a bite to eat and work. Our guests love this option!” said Lauren

Lowe, Community Outreach and Business Operations Manager for the College’s Conference & Event Services. “Our clients like the fact that they can now cut through the Town Square and access other areas of the Center easier than before. We have also noticed many clients/guests visiting the Craft Grille before or after their events.”

To learn more about the new Vistatech Center and its offerings, visit schoolcraft.edu/vistatech.

Vistatech Offerings

01

A renovated and expanded American Harvest restaurant, which is run by the Culinary Arts Department

02

The Craft Grille, a new brew-pub open year-round serving up pub gastronomic delights, mocktails, and award-winning craft beer brewed in the Schoolcraft Brewery by our Brewing and Distillation Technology program students

03

The Collaborative Learning Studio, a multi-function meeting room featuring a demonstration kitchen, a “jumbotron” screen, and technology allowing for interactive experiences

04

A newly-revamped Main Street Café, which sells a range of delicacies such as sandwiches, baked goods, pastries and more

05

A new “Town Square,” an open area for mingling which connects to new breakout rooms, as well as the Kehrl Auditorium

30

Number of Personal & Professional Learning classes held in the CLS.

72

Number of seats in the CLS.



Eric Sokoloski serves up a pint of beer at Great White Buffalo Brewing Co., his brewpub in downtown Northville.

CRAFTING A NEW FUTURE

After a career in accounting, Eric Sokoloski found himself wanting more. So he enrolled at Schoolcraft College to learn how to brew the perfect craft beer.

Real-life experience from his instructors was a critical part of Eric Sokoloski's education at Schoolcraft College.

A Dearborn High School graduate, Sokoloski had spent several years working in accounting. But he found himself wanting more. A radio spot he heard advertising Schoolcraft College's Brewing and

Distillation Technology program piqued his interest.

A passionate homebrewer, he thought combining his business sense with his creative sense would lead to a successful new venture.

"I have an artistic side, but I also have my numbers side. Brewing's both," Sokoloski said. "That worked out for me."

He's since found his new passion: Sokoloski is the owner/brewer of Great White Buffalo Brewing Company, which opened in 2023 in the heart of downtown Northville. The brewery boasts onsite brewed beers, seltzers, house made root beer and offers Michigan made wine and ciders from New Hudson-based Whole Hearted Winery. They also

have a full menu, including a kids menu as well as gluten free and vegetarian options. They have a full patio with events going on every week at the brewery.

It's a venture he would not have been able to be a part of without the education he received at Schoolcraft College.

"The program taught me a lot, honestly. The program's amazing," Sokoloski said. "It has amazing teachers that have real-life experiences. Not only can they teach from the book, but they can tell you how it really is."

Sokoloski began looking for spaces to open a brewery in 2019 looking across the region before finding the brewery's current home at Main and Center in Northville. He and his team transformed the space, a former frozen yogurt spot. Understanding all the needs for launching a business – from the utility costs to filing the regulatory paperwork – were skills he learned while earning a Brewing and Distillation Technology Certificate.

Even after graduating several years ago, Sokoloski still keeps up with the happenings on campus. That includes regularly speaking to Tom Block, the head of the Brewing and Distillation Technology program at Schoolcraft College. That comradery extends not just to his alma mater, but with brewers from across the region.

That's just how the industry looks after its members, Block said. It's not uncommon for either Block or Sokoloski to call each other, looking for advice or some additional product.

"That's one of the advantages of

our craft beer industry," he said. "We can reach out to other brewery owners."

Opening his own place has been an eye-opening experience for Sokoloski, who said it was always his goal. Gone are the days of his friends simply trying the beers he brews; now, the beer he creates is examined closely by paying customers.

"I think it's getting a better, bigger picture of what you're doing. When you're homebrewing and you have a crappy batch, your friends are going to drink it. They'll support you through whatever," he said. "Now I have a brand that I hold to very high standards and if we make a bad batch, we choose to dump it rather than serve an inferior product."

The drive to open his own shop

was something Block saw in Sokoloski right away when he enrolled.

"Eric was an awesome student. Not everybody comes in and says, 'I'm going to open a brewery,'" Block said. "There's a few of them that come in bound and determined."

With a year under his belt, Sokoloski said he's looking forward to the next year as members of the community get to know his product better.

His advice to those looking to change career paths and join the brewing field? Get ready to learn.

"Take the class, get to know the instructors. And get ready to work because it's tough," Sokoloski said. "I knew it was going to be tough, but I didn't know it was going to be this tough."



Sokoloski enrolled in Schoolcraft College's Brewing and Distillation Technology program and began looking for a place to open his own brewery back in 2019.



Top: Tom Shipley poses with several documents from his very first semester at Schoolcraft College back in 1964.

Bottom: A receipt from Shipley's first semester, showing a total of \$135.50.

courses happening at Merri-Bowl in Livonia and at the psychiatric hospital in Northville Township.

Staying a full-time student was an important move for Shipley and many of his male classmates. If he wasn't enrolled full-time, that meant they were eligible to be drafted.

"Twelve credits were the magic number to keep out of the draft," he said. "If you went below 12, you gave the Selective Service office a visit."

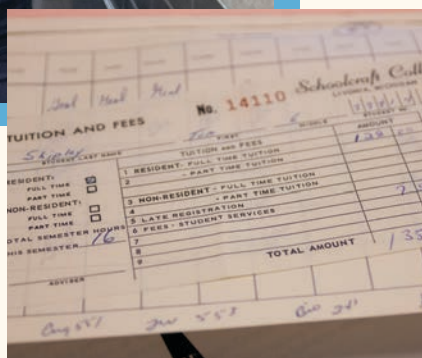
He graduated with his associate degree and transferred to Western Michigan University, where he earned a bachelor's degree in geography and history. Before graduating, Shipley got word his number came up and he would be drafted after earning his degree. Instead of waiting, he opted to join the Navy, where he spent the next 30 years of his career.

He retired as a chief petty officer and later worked for the Department of Homeland Security before retiring.

While attending Schoolcraft College was a way to avoid being shipped to Vietnam, Shipley said it was a great experience to begin a new life in adulthood. It helped set him up for success for the rest of his life.

"You had to get up early in the morning, you had to dress yourself," he said. "And there was nobody there to make you."

REMEMBERING THE FIRST CLASS



Tom Shipley remembers the first day of registration for the first class of Schoolcraft College.

The Bentley High School graduate had plans to attend a four-year university back in 1964, but then he was told about this new college opening in Livonia by Dr. Lois Waterman, the school's first dean. With the Vietnam War draft looming large, he knew he needed to become a full-time student to avoid getting his number pulled. So he put on his best clothes and headed to the newly-created college, where he waited in line to register for classes.

"They were only expecting like 400 kids. Eleven hundred showed up," he said. "People were lined up for registration."

He remembers seeing the administration building constructed first, complete with images of what the College would eventually look like. Those buildings all had the look of

the Forum building.

Shipley said many of the same challenges and issues today's students face were similar back in the 1960s: he and his fellow students all tried figuring out what classes to take, how to balance working with attending school and what they would eat throughout the day.

"If you want to go get something to eat, you'd had to go to Wintergarden Tavern at Seven Mile and Farmington. It was that or else you went to Plymouth Road to Daly's, Big Boy's or something," he said. "There was nothing else out here. Absolutely nothing other than Hawthorne Center, Northville State Hospital or a Rent-It store at Six Mile and Haggerty."

His first semester, he took several classes, including geology, English, French and biology. Several physical education classes took place off campus on account of the gym not yet being built. Shipley remembers



New soccer fields on the south side of campus are used by local soccer clubs.

NEW SOCCER FIELDS BENEFIT THE COMMUNITY



One of the latest development on campus comes in partnership with the Michigan Wolves. Two state-of-the-art soccer fields were added this past year to the south side of campus, investing in youth sports and bringing yet another asset to the community.

These fields feature artificial turf and are lined for four different sizes, depending on the ages of the players. These fields are used by players with the Michigan Wolves, a soccer organization that has had a partnership with Schoolcraft College since 2016. All players have access to on-campus athletic and Trinity Health

medical facilities.

“We are elated for the new soccer fields our players and their families enjoy,” said Ed McCarthy, executive director of Michigan Wolves Soccer Club. “One of the major benefits of training on Schoolcraft’s campus is not only the top-notch soccer fields, but the fact that it is truly a holistic asset to the community. If a player unfortunately gets injured, we have trainers and medical facilities just steps away. Not only will this partnership enhance the physical and mental development of our student athletes, but it will bring our community closer.”

The construction of the new fields involved repurposing the former children’s center lots and optimizing the campus space without compromising parking availability.

The Michigan Wolves, based in Livonia, have been an integral part of the community for 40+ years, coaching and mentoring athletes from ages 4 to 19.



Former Red Wing Darren McCarty gives a talk during a recent PPL session.

LIFELONG LEARNING ABOUNDS

Learning doesn't stop at Schoolcraft College once a student earns a degree. Our Personal & Professional Learning (PPL) department offers students the chance to enrich their minds and become lifelong learners at any age.

PPL offers a wide range of courses, from computer skills to physical fitness to the arts. It's a popular option for people looking to advance in their profession or to simply get out and improve themselves. Community engagement in PPL classes is on the rise: During the 2023-2024 school year, enrollment in PPL classes rose to 19,789 students, up from 18,149 the previous year. Since 2022, enrollment has increased 33%.

One of the biggest draws are the Lifelong Learning presentations, which bring attendees from all over the region to listen to impactful and engaging speakers. From a documentary screening on Lake Superior to an interview with former Detroit Red Wing Darren McCarty, these presentations provide an entertaining experience and add benefit to our community.

Not only has enrollment increased, but student reviews are positive as well. An annual survey, which began in 2022, shows increases to student satisfaction year-over-year.

"Schoolcraft College's Personal & Professional Learning department continues to find new ways to serve our community every year," said Dr. Jodie Beckley, PPL's former director. "With our wide range of offerings, we truly have something for everyone."

By the Numbers

49%

Increase in enrollment in culinary arts and beverage classes from 2023 to 2024.

6:1

The ratio of PPL brochures distributed to earn one registration. This ratio continues to decrease year-over-year; in 2022, the ratio was 13:1.

20%

Increase in enrollment in Lifelong Learning programs from 2023 to 2024.

The second Ozzy Palooza event welcomed students back to campus this past August.



A PLACE FOR EVERYONE

Whether a student or not, there's something for everyone at Schoolcraft College. Our campus not only serves as a place where students learn in the classroom, but it also serves as a community hub.

For years, Schoolcraft College has been a destination for those seeking enrichment through our state-of-the-art facilities. Whether it's getting in some reps at the Fitness Center or attending one of our many community events, Schoolcraft College is embedded into the communities it serves.

In addition to our student events such as School Daze, Schoolcraft gathered to mark other celebrations throughout the year. That included the near-total solar eclipse last April, where students, faculty, staff and members of the community gathered to celebrate this rare event with special glasses, food and fun.

Returning this year were the annual Spooktacular event, attracting ghosts and goblins in the form of area children to the TrinityElite Sports Center. An event full of Halloween fun, it's one the community looks forward to every year.

Our athletic facilities continue to be well utilized. Michigan Elite Volleyball continues to use the Sports

Center, with events happening most weekends. The Michigan Wolves Soccer Club continues to be a major partner, with their practices and matches taking place on campus. That relationship continues to grow, especially with the development of two new soccer fields on the south end of the campus.

The College continues to be a major supporter of events and activities off-campus. That includes involvement in our local chambers of commerce, summertime festivals such as Canton Liberty Fest and charitable efforts as the Michigan Kidney Walk at the Detroit Zoo and having our mascot, Ozzy, read to local schoolchildren.

Hundreds attended the party to observe the solar eclipse in April at Schoolcraft College.



OCELOTS TAKE TO THE ICE

The Schoolcraft Ocelots spend plenty of time on the field and court competing for titles. Now, they also compete on the ice.

The new men's ice hockey competes as a Div. II independent in the American Collegiate Hockey Association, with scheduled games against well-known schools from across the state, including Michigan State University, Oakland University, Central Michigan University and more. The team is coached by Livonia native Dan Phelps and plays their home games at Mike Modano Ice Arena in Westland.

"I'm extremely grateful and honored to be given this opportunity to lead the program for Schoolcraft College," Phelps said. "I'm looking forward to the journey ahead and building a sustainable program that Schoolcraft College is proud to have in their athletic family."

In other sports, back after a hiatus are men's golf, women's golf and women's cross country. These sports increase the number of intercollegiate offerings at the College to 14.

The Ocelots saw plenty of success this past year, with the men's soccer team winning the Michigan Community College Athletic Association title and a berth in the NJCAA National Championship in Tucson, Arizona. The women's soccer team, by virtue of a successful season, also traveled to Tucson to compete for a national title on a wild card berth last fall.

Individually, the Ocelots racked up plenty of accolades, including five teams that received Michigan



Intercollegiate hockey has arrived at Schoolcraft College beginning with the 2024-2025 school year.

Community College Athletic Association All-Academic Team status for having a team GPA of 3.0 or higher during the 2023-2024 year.

Located in a hockey-rich community, the new Ocelots hockey team attract local players from all over the region, looking to grow a new legacy. Under the exciting leadership of Phelps, the team is ready to cement themselves as a major player in the college hockey world.

"Our student athletes continue to showcase their talents both on and off the playing field, and this year was no different," said Patrick Yelsik, the College's Athletic Director. "We saw some incredible moments this past year and we're looking forward to what the next year holds for us. Go Ocelots!"

By the Numbers

138
OCELOTS

Academic All-MCCAA or Academic All-Conference recognition this past academic year.

5
TEAMS

Academic All-MCCAA or Academic All-Conference recognition this past academic year.

14
SPORTS

7 mens sports.
7 women's sports.

GIVING BACK IS OUR PASSION

The Schoolcraft College Foundation plays an important role in the advancement of our students and the College. From supporting various programs, awarding scholarships and helping those who need support to complete their studies, the gracious donations given and distributed through the Foundation helps students achieve their educational goals.

Perhaps the biggest impact comes from the Foundation's Vision 2025 initiative, the College's first comprehensive campaign in its 60+ year history. Led by a volunteer board, Vision 2025's goal is to raise



\$18 million in five years to support several facets of the College, including student success, education and workforce development, and community programs. The Foundation is in the final stretch with \$2.8 million left to raise by June 30, 2025, a goal Executive Director Dawn Magretta knows is attainable.

"Our community is a generous one and knows how important Schoolcraft College is for the betterment of the region," she said. "We appreciate all those who have donated to help our students and important College initiatives."

While the Foundation is known for its work in scholarships, it aids students in many ways, including tutoring services, student emergency needs, mental health care, gap funding for state tuition assistance including Michigan Reconnect and Michigan Advantage scholarships, dual-enrollment scholarships for high schoolers, and much more.

Some of those amenities came from grants, including a \$40,000 grant from the Masco Fund, which created the Masco Student Success Fund. Managed out of the Hinkle Center which provides student support, this Fund helps students overcome various challenges and barriers that may affect their academic performance and well-being, such as transportation, childcare, food insecurity and more.

The Foundation has left its mark on campus, supporting various areas including a \$2 million grant to the expansion of the Vistatech Center, and the Culinary Arts program. Its impact is seen in various areas like the Multicultural Fair, which attracted hundreds of visitors to the campus; the SteamZ student-led conference that discusses academic and social impact topics and more.

Always looking at the future, the Foundation offers more than \$130,000 each year in competitive grants for faculty and staff initiatives, aiding their educational mission and piloting new, exciting initiatives like Schoolcraft's Campus Comfort Companion dogs. Schoolcraft faculty and staff continue to give back above and beyond their jobs, donating more than \$60,000 annually.

For information about the Schoolcraft College Foundation or to make a gift, please visit scf.schoolcraft.edu, email foundation@schoolcraft.edu, or call 734-462-4455.

By the Numbers

\$2.8M

Amount of money left to hit five-year goal of \$18 million raised for Vision 2025.

\$2M

Amount given to expand the Vistatech Center and Culinary Arts program.

\$130K

More than \$130,000 given annually for faculty and staff initiatives.

\$60K

Amount donated to the Foundation by staff and faculty.







Schoolcraft
College®

2023 - 2024

