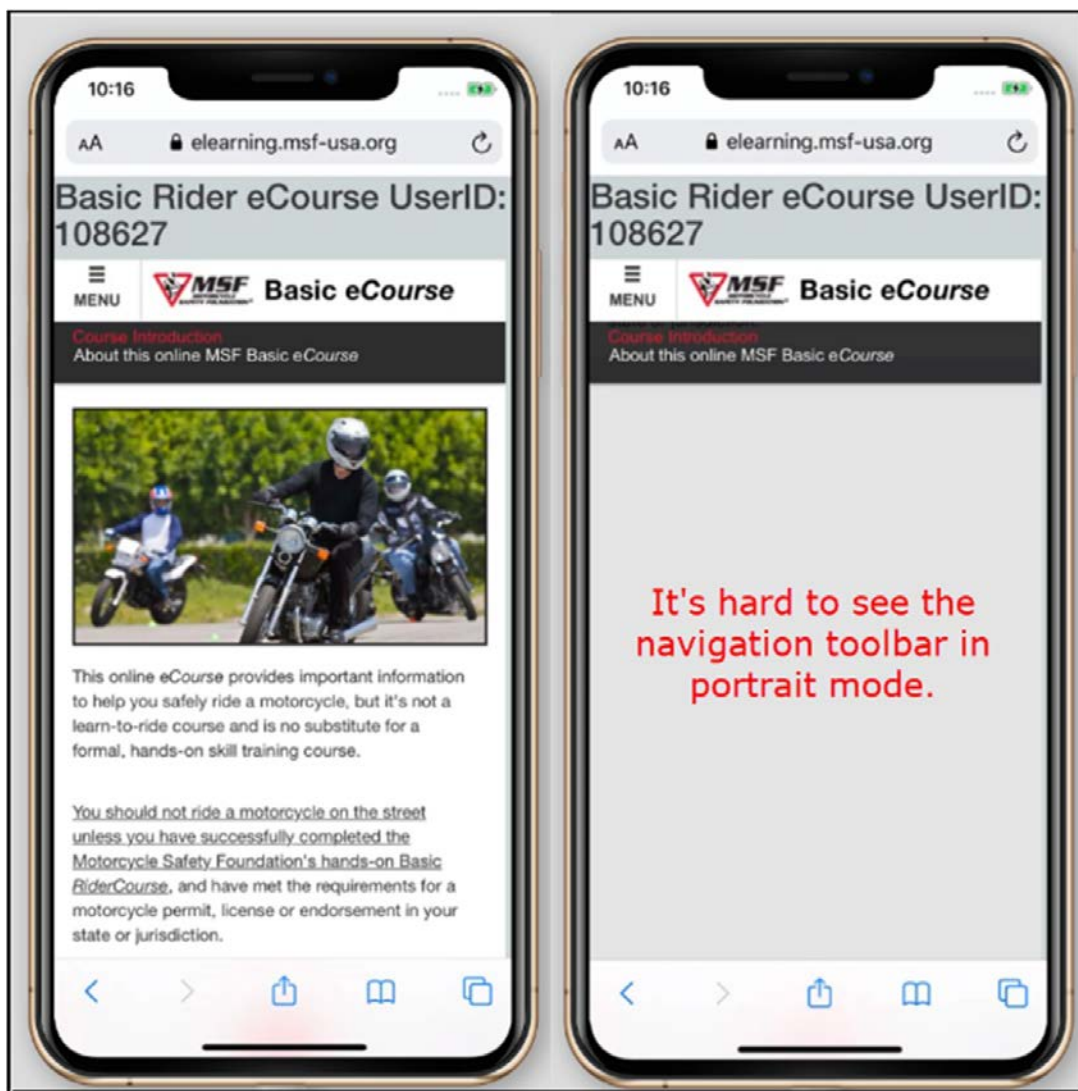


Viewing the eCourse Navigation Toolbar on a Mobile Device

All MSF eCourses are mobile-friendly and can be completed on any device running an updated, modern web browser. If you are having trouble moving past the first slide in your course, you may need to resize or reorient your device to see the navigation toolbar at the bottom of the page. You use this toolbar to move forward and backward and to pause and play the audio.

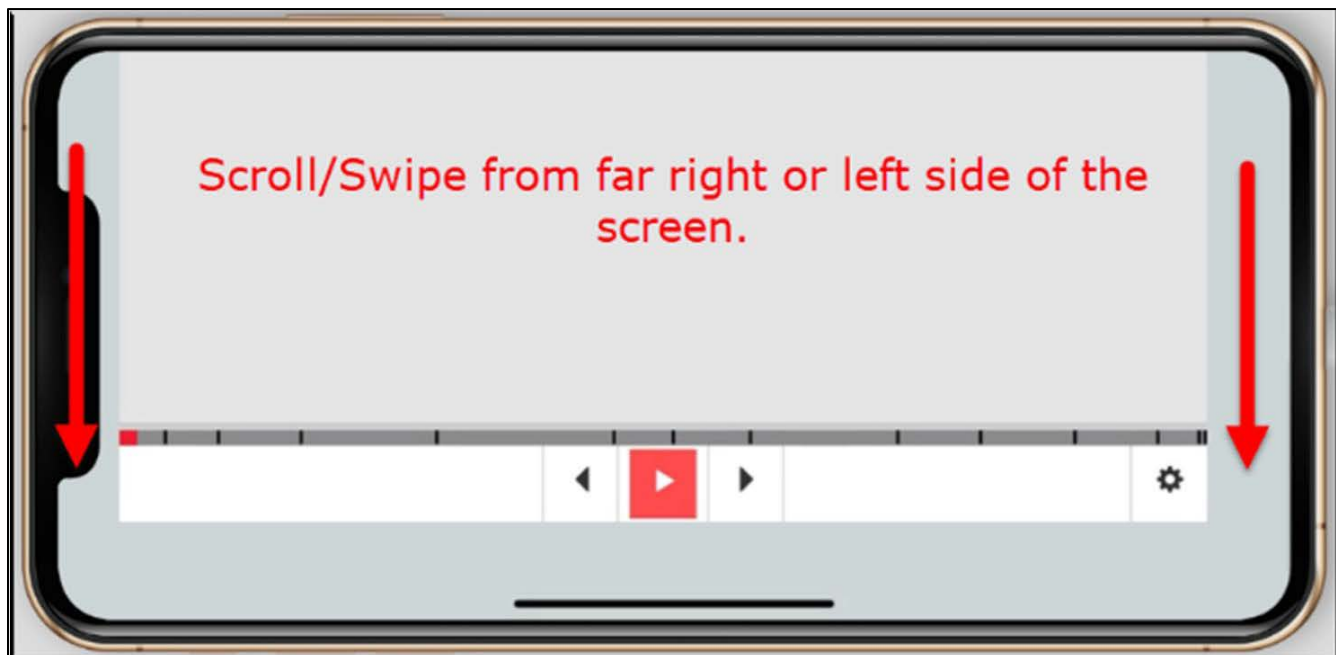
First, try turning your phone or tablet from portrait to landscape mode.



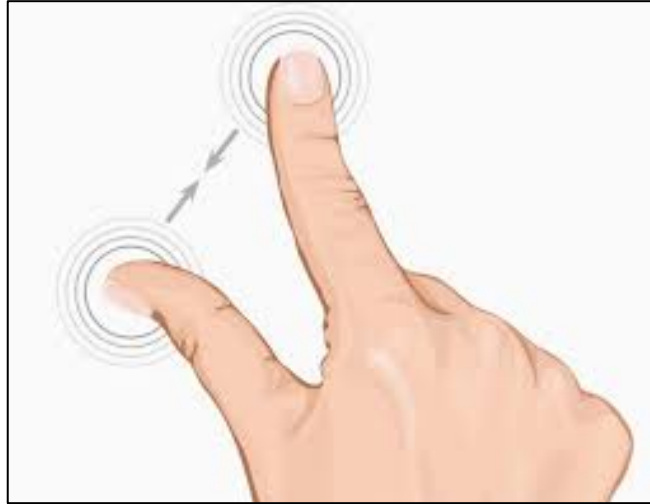
In landscape mode, swipe to scroll to the bottom of the page from the center of your screen.



When you get to the bottom of the page, scroll down by swiping from either the right or the left edge of the screen.



If you still cannot see the navigation toolbar, make sure your screen is not 'zoomed-in,' either by 'pinching' or double-tapping the screen.



You may need to click the play/pause button one or two times and let the audio play to the end to see the red, blinking forward arrow to go to the next slide.

If you are still having trouble, please contact MSF Support at msfsupport@msf-usa.org.