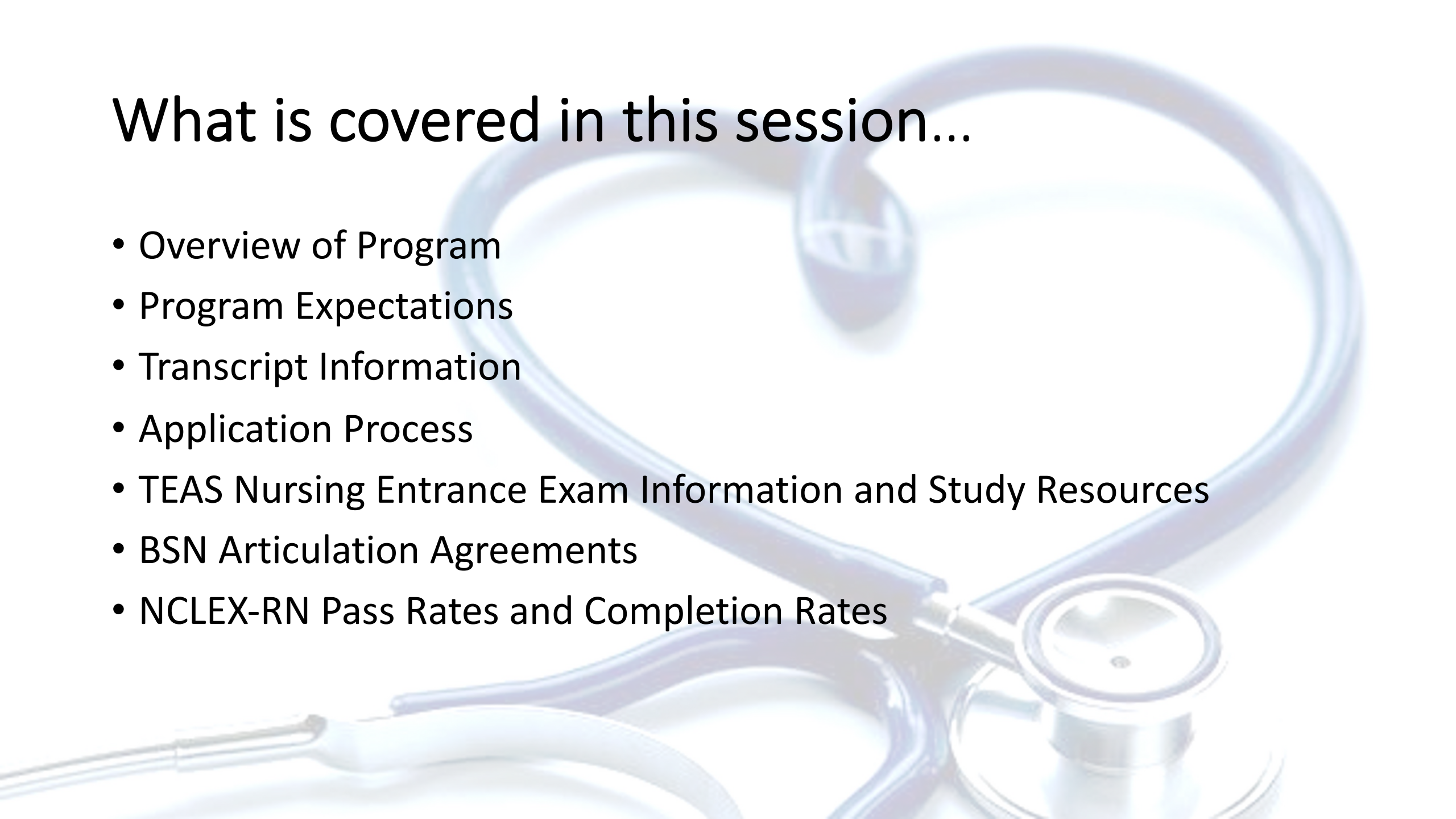


# Schoolcraft LPN to RN Option in the Associate Degree in Nursing Program

**Information Session**

# What is covered in this session...

- Overview of Program
- Program Expectations
- Transcript Information
- Application Process
- TEAS Nursing Entrance Exam Information and Study Resources
- BSN Articulation Agreements
- NCLEX-RN Pass Rates and Completion Rates



# Overview of Program

- Students enter the LPN to RN Option in the fall semester (August)
- The program is about 8 months long
- Classes are very structured. Once students begin the program, they cannot go at their own pace and must follow the classes that are part of their cohort.
- All second year NURS classes are 7 weeks long. One in the first 7 weeks, and the other in the second 7 weeks of the semester. Students have 1 theory day and then 2 clinical days a week on days/afternoons/weekends. Students must be able to flex their schedule to do clinical placements.
- In addition to general education requirements, students will have four nursing classes to complete the program: 2 taken in the Fall, and 2 in the Winter (Adv. Med/Surg; Psych; Maternal Child; Adv. Concepts in Registered Nursing).



# Program Expectations

- Nursing students must achieve an 80% or higher in all nursing courses
- Students who are unsuccessful with any two nursing courses may not continue in the nursing program.
- Course tests are completed using the course Blackboard site or other computerized software.
- A Nursing Resource Instructor is available by appointment during the week to assist students with strategies and activities to enhance success.

# Sample Schedule

- **Second Year – Fall**

- NURS205
- NURS248

- **Second Year – Winter**

- NURS246
- NURS250

- (the 205, 246, 248 courses may not be in that exact order)

## General Education Requirements:

- ENG101\* AND ENG102
- MATH 102, 111, 113 or higher \*
- BIOL236 OR BIOL237&238 \*
- PSYCH201\*
- HUM106 (OR any humanities)

\*Pre requisite courses required to submit application

# Transcripts

- Students must send all **official** transcripts to Schoolcraft College, especially where previous coursework has been completed.
- To request official transcripts, **you must contact each school** where you took transferrable classes and ask an official transcript be sent to Schoolcraft. Hand delivered transcripts will not be accepted.
- Electronically, the school can send your transcripts to [scorecord@schoolcraft.edu](mailto:scorecord@schoolcraft.edu)
- By Mail, the school can send your transcripts to:  
Schoolcraft College  
Attn: Records  
18600 Haggerty Road  
Livonia, MI 48152




# A Note on Transferring Credits...

- Transcripts are accepted from any school with HLC (Higher Learning Commission) Accreditation
- LPN NURS classes do not typically transfer; however, your LPN license will waive the first year of the Nursing program.
  - The waived courses include: NURS104, NURS105, NURS106, NURS107, NURS108, and NURS128
- All Associate degrees require a minimum of 60 credits. If LPN to RN students do not have enough transferable credits to reach 60 by the time they graduate, then they can pay a \$25 fee to bring in credit for their LPN license.

# Transferring from a School in Michigan?

You can see how your classes will transfer into Schoolcraft using the Michigan Transfer Network [website](#)

**Note on your LPN License:**  
You do not have to provide a physical copy of your LPN License. The Nursing office will look up your licensure through the LARA website for verification when your application is submitted to the nursing department.

Home Students ▾ Faculty & Staff ▾ Find Colleges & Universities

## Search By Sending Institution

- 1 Select a **Sending Institution** (required).
- 2 Select **Subject** OR **Receiving Institution** (only one of these fields is required).

Sending Institution  
Wayne County Community ▾

Subject

Course



psy

Q

Receiving Institution  
Schoolcraft College ▾

Search

Clear Search



SENDING SUBJECT	COURSE	CREDITS	RECEIVING INSTITUTION	SUBJECT	COURSE	COURSE TITLE	CREDITS	GENERAL CREDITS	WAIVE CREDITS	START	END	
PSY	100	3.00	Schoolcraft College	PSYCH	INTR	Psych Intro Gen Cred	3.00	-	-	1.1.1960	6.30.2011	<a href="#">Details</a>
PSY	101	3.00	Schoolcraft College	PSYCH	201	Intro Psychology	3.00	-	-	1.1.1960		<a href="#">Details</a>
PSY	200	3.00	Schoolcraft College	PSYCH	229	Life Span Developmental Psychology	3.00	-	-	1.1.1960		<a href="#">Details</a>
PSY	202	3.00	Schoolcraft College	PSYCH	206	Human Sexuality	3.00	-	-	1.1.2020		<a href="#">Details</a>
PSY	220	3.00	Schoolcraft College	PSYCH	209	Child Psychology	3.00	-	-	1.1.1960	12.31.2019	<a href="#">Details</a>
PSY	225	5.00	Schoolcraft College	PSYCH	209	Child Psychology	3.00	-	-	1.1.1960		<a href="#">Details</a>

Step 1: Meet with Advisor



# What are the Requirements to Apply?

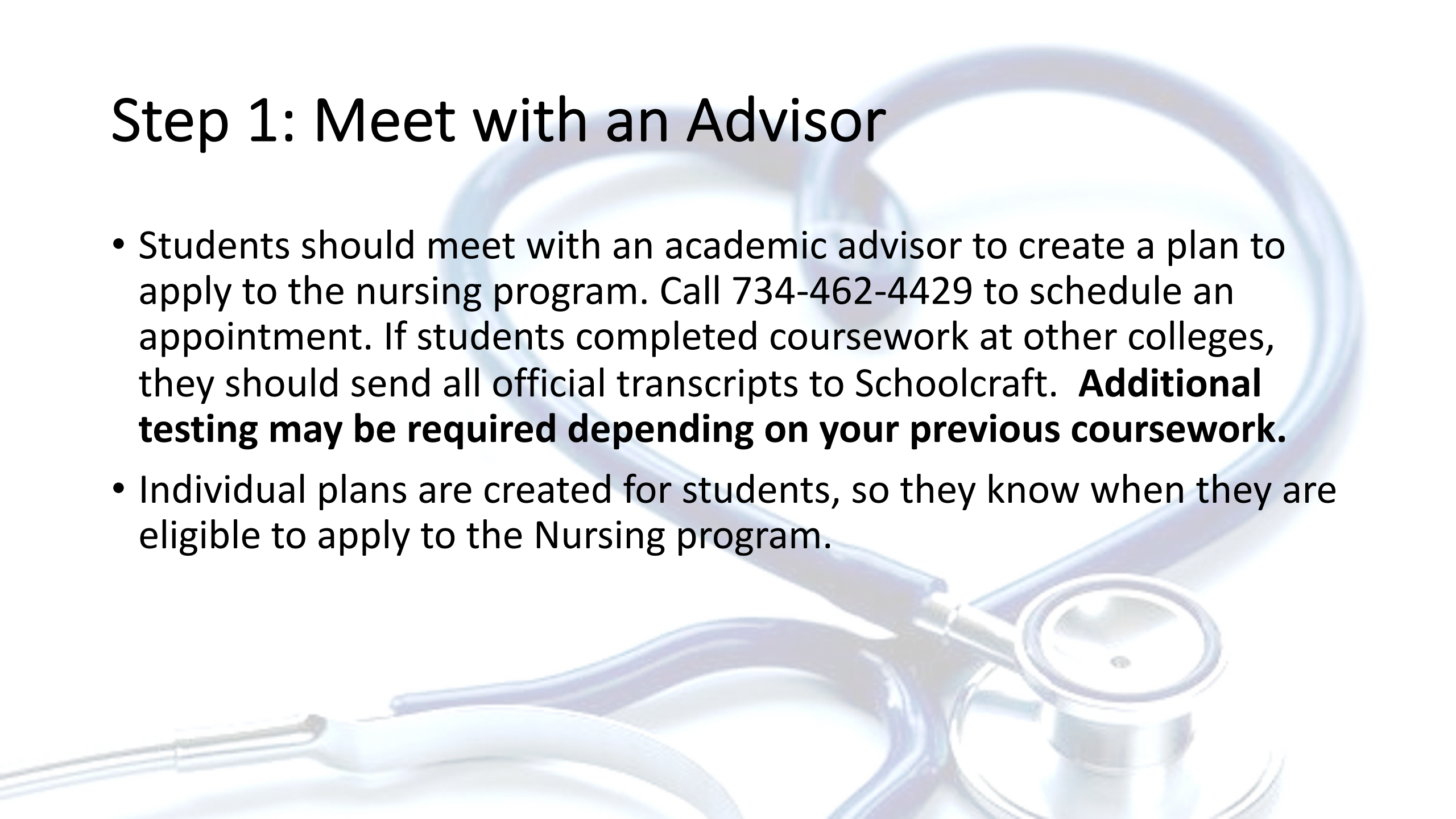
- College Level in English/Reading/Math
  - Can be demonstrated through SAT/ACT/Placement test or equivalent coursework
- Anatomy and Physiology (**3.0/B 80% or better**)
  - Two options
    - **BIOL237** (Anatomy and Physiology 1) and **BIOL238** (Anatomy and Physiology 2) – Note that both are required to apply.
    - **BIOL236** (Anatomy and Physiology) – this is a combined course, and essentially takes the content of both BIOL237 and 238 and puts it into 1 semester
- Mathematics (2.0/C or better)
  - Must be 100-level class: MATH102, MATH111, MATH113 or higher
- English Composition 1 (2.0/C or better)
- Introduction to Psychology (2.0/C or better)
- Acceptable scores on the TEAS nursing entrance exam

# Admission List

- There are only so many spots available each year. If the Fall is full at the time you apply, then your application will be moved to the following Fall as your start date. Students get an email asking them to move up if a spot becomes available. Program information is emailed to students approximately 3-4 months before fall semester.
- Once an application is submitted, you are accepted; it is just a matter of when a spot is available for you to start. It's recommended that you take some of the general education courses needed for a BSN degree while you wait to start the nursing courses. Hospitals are now requiring graduates from ADN programs complete their BSN within 5 years of hire.

# Step 1: Meet with an Advisor

- Students should meet with an academic advisor to create a plan to apply to the nursing program. Call 734-462-4429 to schedule an appointment. If students completed coursework at other colleges, they should send all official transcripts to Schoolcraft. **Additional testing may be required depending on your previous coursework.**
- Individual plans are created for students, so they know when they are eligible to apply to the Nursing program.





## Step 2: Complete Courses

- If students need any foundation courses in English, Reading, or Math, they must complete these courses first.
- In addition to the courses needed to apply to the program, other general education classes are also required before graduation.
  - ENG102 English Composition 2 (3 credits)
  - Humanities (minimum 1 credit)
- Priority should be put on courses needed to apply, but the above classes are additional options if students need more credits.

# Step 3: TEAS – Nursing Admission Exam

- Composite: 60%
  - Reading: 68%
  - English: 60%
  - Math: 60%
  - Science: 50%
- TEAS exam must be taken at Schoolcraft College's Testing Center.
  - Students have two attempts in a 12-month period to take the exam; each attempt is good for 12 months. We take the highest score between your two attempts.
  - If you don't achieve minimum scores on your first attempt, it's important to speak with your academic advisor about ways to prepare for your second attempt.
  - You must get a composite score of 60% or higher on all TEAS attempts, so give maximum effort in all areas.
  - Students cannot take a third attempt until the oldest earlier first attempt expires.
  - Students have four attempts overall to pass the TEAS exam. After that, will be unable to apply to our program.

# What is on the TEAS Exam?

Multiple-choice exam that **must be taken using the online version.**

The TEAS Exam includes:

- **31% Reading:** Key Ideas & Details (15%), Craft & Structure (9%), Integration of Knowledge & Ideas (7%)
- **16% English and Language:** Convention of Standard English (6%), Knowledge of Language (6%), Vocabulary Acquisition (4%)
- **31% Science:** Human Anatomy & Physiology (21%), Life & Physical Science (5%), Scientific Reasoning (5%)
- **22% Mathematics:** Number & Algebra (16%), Measurement & Data (6%)



# How do I prepare?

- [TEAS Study Manual](#)
- [Learning Assistance Center](#) – TEAS Coach
  - On Campus Study Groups
  - Blackboard TEAS Study Page
  - One on One Tutoring
- [TEAS Preparation Course](#)
- Facebook: “Free ATI TEAS 7 Study Group” (not through Schoolcraft, but a good resource)

# Step 4: Apply to the Program

- All application requirements must be complete
  - Pre-requisite Coursework must be posted on your transcript with a grade
  - If transferring credit, all official transcripts must be at Schoolcraft and evaluated
- TEAS
  - Must be in our system. If you took the exam at Schoolcraft, it can take a couple days to be uploaded.
  - Any attempts taken after September 1, 2022 at a location other than Schoolcraft will not be accepted. Scores taken at other locations prior to that date are acceptable.
- LPNs must also provide a current resume and a recent employment pay stub at the time they are ready to submit an application.
- **To Apply: Make an appointment with an academic advisor. The Advisor fills out the application for you and checks off that every requirement is complete. To schedule an appointment, you can call 734-462-4429.**

# Nursing Application

[LINK TO APPLICATION](#)





# BSN Articulation Agreements



- <https://www.schoolcraft.edu/schoolcraft-to-u/transfer-options/transfer-out/articulation-agreements>
- These special agreements may allow you to transfer about 90 credits toward your BSN, which means you only have approximately 30 credits left at the university.
- Work with your advisor on the extra classes you could take to go toward your Bachelor's Degree.

# NCLEX Pass Rates/Nursing Program Completion Rates

- <https://www.schoolcraft.edu/academics/healthcare-and-health-sciences/nursing>



# Thanks for viewing!

- Picture: <https://www.change.org/p/pay-nursing-students-for-working-at-placements>
- To schedule an appointment to meet with an academic advisor, give our office a call at 734-462-4429.

