



SCII

Schoolcraft College International Institute

International Presentation Series

Winter 2008

~ Public Welcome and Free of Charge ~

Schoolcraft College International Institute (SCII) strives to enhance the international and multicultural content of coursework, programs and other college activities to promote an appreciation of the diversities and commonalities among world cultures and better understand the global forces shaping people's lives. SCII and its partners are pleased to offer this series of films, speakers and events to promote global literacy.

FOCUS EAST ASIA for 2008

A new year brings a new global region into the spotlight. Throughout 2008, East Asia will be spotlighted by the Presentation Series and International Film Festival. East Asia is described as including China, Tibet, Taiwan, Japan, as well as North and South Korea. This region seemed a natural pick since the Olympic games will be held in China in 2008 and several Schoolcraft faculty members have recently had the opportunity to visit China as part of two separate grant-funded programs.

This series is sponsored by Schoolcraft College International Institute and supported by a grant from the Schoolcraft College Foundation.

January 11-28
Lower Waterman

HATEFUL THINGS
Traveling Exhibition
Jim Crow Museum of Racist Memorabilia
Ferris State University

The Jim Crow Museum of Racist Memorabilia features an extensive collection of racist objects that trace the history of the stereotyping of African Americans. The museum, located at Ferris State University, offers "Hateful Things," a traveling exhibition of these images to further the museum's mission of stimulating the scholarly examination of historical and contemporary expressions of racism and intolerance, as well as promoting racial understanding and healing.

The 39 piece traveling exhibition contains items of material culture from the late 19th century to the present, embodying the terrible effects of the Jim Crow legacy. In addition to items from popular and commercial culture, the traveling exhibit also contains images of violence against African Americans as well as the Civil Rights struggle for racial equality. Signage for each object places it in its proper cultural or political context.

The disturbing objects in "Hateful Things" have been lifted from their original purposes to now serve as powerful reminders of America's racist past. But more importantly, the exhibition gives viewers new eyes with which to see present-day images of racial stereotyping that might otherwise pass unchallenged.

Dr. David Pilgrim, professor of sociology at Ferris State University, is the primary donor and curator of the Museum and has authored the website materials.

Hours: 10 am to 7 pm on Monday through Thursday
10 am to 5 pm on Friday
To Be Arranged on weekends

Faculty can schedule class tours by calling Elizabeth in Student Activities, ext. 4422. Student Activities staff and student volunteers will be available to take classes through the exhibit and offer a short introduction and brief reflection exercise at the end.

A short, fast-paced documentary film about the Museum, *Jim Crow's Museum*, is available at the Bradner Library on DVD. For more information: <http://www.ferris.edu/htmls/news/jimcrow/>

The Hateful Things Exhibit is sponsored by Student Activities, The Honors Program, the Liberal Arts Division and The Season for Nonviolence Committee

<p>January 23 Wednesday 9:30-11:00 AM LA 200</p>	<p>BUDDHIST TEACHINGS, PRACTICES , AND MEDITATIONS</p> <p>The Venerable Bhante Sankichcha, Resident Monk Great Lakes Buddhist Vihara Southfield, Michigan</p> <p style="text-align: right;"><i>Focus East Asia</i></p> <p>Buddhism is numbered among the world's major religions, following Christianity, Islam and Hinduism in the number of followers. Buddhism, also known as <i>Buddha Dhama</i> or <i>Dhamma</i> which means "teachings of the Awakened One" in Sanskrit, was founded in the 5th century B.C.E. based on the teachings of Siddhartha Guatama also known as "the Buddha." The monks' order associated with this religion began during the Buddha's lifetime in India and is regarded as among the oldest organizations on earth.</p> <p>Bhante Sankichcha has been a resident monk at the Great Lakes Buddhist Vihara (GLBV) since 2001. Born in Kandy, Sri Lanka, he received novice ordination at the age of 15 in 1991 and his higher ordination in 1996. After living in Australia for several years, Bhante Sankichcha moved to Michigan's Great Lakes Buddhist Vihara in 2001. The Vihara, located in Southfield, Michigan, was established in 1997 to serve a small community of Buddhists in the Michigan Great Lakes and southern Ontario areas. The primary goal of the center is inner peace for Buddhists and non-Buddhists alike. The vihara is a place for worship, meditation, learning, and fellowship.</p> <p>For more information: http://www.glbvihara.org/</p> <p style="text-align: center;"><i>The Focus East Asia Presentation Series is sponsored by the Schoolcraft College International Institute and supported by a grant from the Schoolcraft College Foundation.</i></p>
<p>January 29 Tuesday 10-11:30 AM LA 200</p>	<p>THE STORY OF THE WEEPING CAMEL</p> <p style="text-align: right;"><i>International Film Festival</i></p> <p>Some fairy tales are true... some legends are real...</p> <p><i>The Story of the Weeping Camel</i> is an enchanting film that follows the adventures of a family of nomadic herders in Mongolia's Gobi region who face a crisis when a mother camel unexpectedly rejects her white newborn calf after a particularly difficult birth. The family makes valiant efforts to warm the mother to her child. Now, all hope lies with the family's two young boys, who must travel across the desert to find a healing musician. Uniquely composed of equal parts reality, drama, and magic, this film is a window into a different way of life -- and the universal terrain of the heart.</p> <p>This unique Mongolian documentary was directed and written by Byambasuren Dayaa and Luigi Falorni.</p> <p style="text-align: center;">"An astonishing, mesmerizing film about a vanishing way of life." Jeannette Catsoulis, <i>Las Vegas Mercury</i> "...<i>Weeping Camel</i> essentially lets native people tell their own unforgettable story." Jonathon Curiel, <i>San Francisco Chronicle</i> "Believe it or not, the camel deserves an Oscar." Emily Blunt, <i>Blunt Review</i></p> <p>Runtime: 87 minutes Language: Mongolian w/ English subtitles Rating: PG Release: 2004 Awards: Nominated for an Oscar. Another 9 wins & 5 nominations</p> <p>For more information:</p> <p style="text-align: center;"><i>The Focus East Asia Presentation Series is sponsored by the Schoolcraft College International Institute and supported by a grant from the Schoolcraft College Foundation.</i></p>
<p>January 28-31</p>	<p>A MIGHTY HEART: THE BRAVE LIFE AND DEATH OF MY HUSBAND, DANNY PEARL</p> <p style="text-align: right;"><i>Pageturners</i></p> <p>by Mariane Pearl</p> <p>In <i>A Mighty Heart</i>, an astonishingly courageous woman tells the terrifying and unforgettable story of her husband's life and death. For five weeks the world watched and worried about Danny Pearl, a reporter for the <i>Wall Street Journal</i>, kidnapped in Karachi, Pakistan. And then came the news of his shocking and brutal murder. Danny's reasons for being in Karachi, the complete story of his abduction, and the intense effort to find him are told here for the first time.</p>

	<p>A <i>Mighty Heart</i> has been made into a movie with Angelina Jolie as Mariane Pearl and Dan Futterman as Daniel Pearl.</p> <p>Campus Sponsor: Ela Rybicka</p> <p>Mon. Jan. 28 6:30-7:30 p.m. L 116 Tues. Jan. 29 1:30-2:30 p.m. L 116 Wed. Jan. 30 12:00-1:00 p.m. L116 Thurs. Jan. 31 6:30-7:30 p.m. RC Lib.</p>
<p>February 7 Thursday 11:30-1 PM LA 200</p>	<p>THE JAPAN – U.S. RELATIONSHIP Tamotsu Shinotsuka Consul-General of Japan in Detroit</p> <p style="text-align: right;"><i>Focus East Asia</i></p> <p>The Consulate General of Japan in Detroit was permanently established in 1993 in recognition of the growing number of Japanese businesses and residents in Michigan and Ohio. The Consulate promotes mutual understanding and an ongoing dialogue between the citizens of Japan and the U.S. and a public relations section serves as a resource center for those interested in learning more about Japan. In addition to assisting Japanese residents in the area, the Consulate serves the general public by issuing visas and other documents related to work, study, or travel in Japan. A unique feature of the Consulate in Detroit is its in-house posting of an automotive engineering specialist from Japan whose primary task is to perform on-site testing of U.S. vehicles, facilitating exports to Japan.</p> <p>Tamotsu Shinotsuka was born in Ibaraki Prefecture, Japan and graduated from Keio University, Faculty of Law. During his diplomatic career with Japan's Ministry of Foreign Affairs, his assignments have taken him to such varied places as Nigeria, Austria, Germany, and Pakistan. In 2006, he came to Detroit to assume his current post of Consul General of Japan for Michigan and Ohio. Mr. Shinotsuka has published several papers as a diplomat and researcher, including <i>The Impact of the Iraq War in Pakistan</i> (NIRA); <i>The 2001-2002 India-Pakistan Crisis– How Nuclear War was Avoided</i> (Seikai Shuho); and <i>Changes in Northeastern China – Regional Cooperation in the Far East</i> (Gaiko Forum).</p> <p>For more information: http://www.detroit.us.emb-japan.go.jp/en/info/page1.htm</p> <p style="text-align: center;"><i>The Focus East Asia Presentation Series is sponsored by the Schoolcraft College International Institute and supported by a grant from the Schoolcraft College Foundation.</i></p>
<p>February 8 Friday 6-8 PM MC 200 (McDowell)</p>	<p>HISTORICAL TRAUMA & BOARDING SCHOOL SYNDROME Warren Petoskey Citizen of the Waganakising Odawa Nation, Bear Clan Spokesperson, Odawas for Change</p> <p style="text-align: right;"><i>Native American Cultural Club</i></p> <p>Warren Petoskey has traveled the U.S. giving presentations on Native American historical trauma and boarding school syndrome since 1998. Warren began his research into this topic after discovering that his grandfather had attended the Carlisle Industrial School located in Carlisle, Pennsylvania. Founded by Richard Henry Pratt, the school was the first off-reservation government boarding school for Native American Indian children, which many regard as a failed attempt to forcibly assimilate Native American children into United States culture. Between 1879 -1918, more than 10,000 children went through the Carlisle school. Warren investigates the residual effects of these historical events.</p> <p>Petoskey is a published free lance writer, certified addictions counselor, Native Artisan, as well as a spiritual/traditional counselor.</p> <p>For more information: http://www.redarrow.homestead.com/index.html</p> <p style="text-align: center;"><i>This event is sponsored by the Native American Cultural Club, the Sociology-Anthropology Department, and the Schoolcraft College International Institute which is supported by a grant from the Schoolcraft College Foundation.</i></p>
<p>February 13 Wednesday 1-2:30 PM MC 200 (McDowell)</p>	<p>THE NEW BEDFORD SAMURAI: 19TH-CENTURY HIGH-SEAS ADVENTURES AND THE ECOLOGICAL DAMAGE THEY SPREAD Anca Vlasopolos, Author</p> <p style="text-align: right;"><i>Focus East Asia</i></p> <p><i>The New Bedford Samurai</i>, just released in 2007, is a non-fiction novel blending the life of Manjiro Nakahama—a runaway, illiterate Japanese boy who in 1841 embarked on a fishing boat alongside four older men—with meditative chapters on the environmental effects of 19th-century globalization. Cast with his companions onto an uninhabited island in the Pacific, Manjiro was rescued by an American whaling ship. Ten years later, he returned to Japan, where, after being imprisoned, he was elevated to the status of samurai. The</p>

	<p>book contains adventures on the high seas; life in 19th-century whaling towns in New England; a Dickensian apprenticeship; an episode during the Gold Rush; the colossal changes Manjiro, on his two trips back to the U.S., perceives in San Francisco, Boston, and Hawaii; a capsule history of Japan right before and right after its opening to the West; and reflections on the traffic in humans and animals that has remained with us to this day.</p> <p>In addition to <i>The New Bedford Samurai</i>, Anca Vlasopolos has also published a detective novel, a memoir, various short stories, over 200 poems, and the poetry collection <i>Penguins in a Warming World</i>. She was born in 1948 in Bucharest, Rumania. Her father, a political prisoner of the Communist regime in Rumania, died when Anca was eight. After a sojourn in Paris and Brussels, at fourteen she immigrated to the United States with her mother, a prominent Rumanian intellectual and a survivor of Auschwitz. Anca is a professor of English and Comparative Literature at Wayne State University in Detroit, Michigan.</p> <p><i>The New Bedford Samurai</i> has been nominated for the Pulitzer, the PEN-Faulkner, and the Kiriayama Awards.</p> <p><i>The Focus East Asia Presentation Series is sponsored by the Schoolcraft College International Institute and supported by a grant from the Schoolcraft College Foundation.</i></p>
<p>February 20 Wednesday 2-3:30 PM MC 200 (McDowell)</p>	<p>A VISUAL LOOK AT CHINA</p> <p>Colleen Case, Associate Professor, Computer Graphics Technology Sarah Olson, Associate Professor, Art and Design Schoolcraft College</p> <p style="text-align: right;"><i>Focus East Asia</i></p> <p>In the summer of 2005, Sarah Olson and Colleen Case were awarded a Fulbright Grant to explore China along with 16 other professors from 2-year colleges in the Midwest. This trip was organized by Theo Sypris of the Midwest Institute for International/Intercultural Education (MIIE). The focus of the trip was for each educator to infuse experiences from the trip into course materials for their respective disciplines, which included geography, history, art and literature. The 5-week itinerary took the group to cities (including Beijing, Xian, Shanghai and Guangzhou) as well as a variety of rural areas. Colleen and Sarah gathered a wealth of visual imagery which they will share in this presentation.</p> <p>As an Associate Professor in the Computer Graphic Technology program at Schoolcraft College, Colleen Case teaches courses in digital imaging, graphic design, web design, electronic portfolio and experiments with business alliance project classes. When not in the classroom, Colleen spends her time as a freelance technical editor for educational textbook publishers and has assumed significant leadership roles in SIGGRAPH, the professional computer graphics organization. Colleen has had two experiences in China. She led a workshop in Hangzhou for an International audience sponsored by the National Science Foundation, and recently had the opportunity to return as a Fulbright Scholar through the MIIE. Colleen graduated from Eastern Michigan University with concentrations in Computer Science and Educational Technology.</p> <p>Sarah Olson, Associate Professor of Art and Design, regularly teaches courses in Design, Life Drawing and Painting, and serves as Chair of Schoolcraft's Department of Art and Design.. During the Fall semester of 2007 she was granted a Sabbatical Leave to create works of art reflecting her experiences during her 2005 Fulbright expedition to China. This work will be on exhibit at Schoolcraft College in the near future. Sarah earned her MA in Art from the University of Michigan.</p> <p><i>The Focus East Asia Presentation Series is sponsored by the Schoolcraft College International Institute and supported by a grant from the Schoolcraft College Foundation.</i></p>
<p>February 25 Monday 11:30-1:00 PM MC 200 (McDowell)</p>	<p>CHINA FROM THE INSIDE: WOMEN OF THE COUNTRY</p> <p>China is rapidly becoming a world power, but much of the country and its people remain hidden to those outside its borders. China is at a critical point in its history -- it is richer and stronger than ever, but the clash between economic policies and the Communist political agenda complicates the lives of many of its citizens. This documentary explores some of China's many contradictions and provides a rare insider's view of China, her institutions and people.</p> <p>China's women are argued over at their weddings and have one of the highest suicide rates in the world. Now many are beginning to fight for their rights and their futures. This segment, <i>Women of the Country</i>, shows discrimination against Xinjiang's Muslim women, various hardships faced by Tibetan women, and the status of some of those who have left the countryside for factory work in the cities.</p> <p>This documentary was written and directed by Emmy-winning filmmaker Jonathan Lewis who spent 14 months shooting and exploring in China, and then nearly another four years finishing the documentary.</p> <p>Runtime: 60 minutes Language: English/ Subtitles Rating: NR Release: 2006</p> <p style="text-align: right;"><i>International Film Festival</i></p>

	<p>For more information, China/US Quiz, Interactive Map: http://www.pbs.org/kqed/chinainside/about.html For Community Discussion Guide: http://www.pbs.org/kqed/chinainside/guide.html See pages 5-6, 13.</p> <p><i>The Focus East Asia Presentation Series is sponsored by the Schoolcraft College International Institute and supported by a grant from the Schoolcraft College Foundation.</i></p>	
<p>February 25-28</p>	<p>THE STRANGER by Albert Camus</p> <p>Through the story of an ordinary man unwittingly drawn into a senseless murder on an Algerian beach, Camus explored what he termed "the nakedness of man faced with the absurd." First published in 1946; now in a new translation by Matthew Ward.</p> <p>Campus Sponsor: Mark Huston</p> <p>Mon. Feb. 25 6:30-7:30 p.m. L 116 Tues. Feb. 26 1:30-2:30 p.m. L116 Wed. Feb. 27 12:30-1:30 p.m. MC 200 - Panel Discussion Thurs. Feb. 28 5:00-6:00 p.m. RC Lib</p>	<p><i>Pageturners</i></p>
<p>March 12 Wednesday 12- 1:00 PM Waterman 210</p>	<p>CHINA SERIES (Student Focus) CHINA 2007 – AN EYE-OPENER! GET READY! ~Open to the Public~</p> <p>China, a fascinating, proud and focused society is growing and on the move economically and educationally. Find out what students need to know about emerging countries like China. Participants will also have the opportunity see and hear opinions about education and the world from American and Chinese students. Learn about your potential global work partners!</p> <p><i>This event is co-sponsored by Learning Support Services and the Schoolcraft College International Institute.</i></p>	<p><i>Student Success Seminars</i></p>
<p>March 12 Wednesday 3-4:20 PM Waterman 210</p>	<p>CHINA SERIES (Faculty Focus) CHINA 2007 – IT'S NOT KANSAS! ~Open to the Public~</p> <p>China, a fascinating, proud and focused society is growing and on the move economically and educationally. If you are interested seeing and hearing from Chinese students, administrators, teachers, and other native "Bejingers" then this seminar will be of interest. The focus will be on the educational structure, philosophy, and professional development methods used by Chinese educators. Similarities and differences in Chinese and American systems will be explored. What can we learn from them? Through collective discussion perhaps we can discover the answer.</p> <p><i>This event is co-sponsored by Learning Support Services and the Schoolcraft College International Institute.</i></p>	<p><i>Student Success Seminars</i></p>
<p>March 17 Monday 6:30-8:30 PM Presentation Room VisTaTech</p>	<p>NAURYZ WITH ROKSONAKI</p> <p>The cutting edge Kazakh musical group <i>Roksonaki</i> is in the U.S. for a residency tour to celebrate <i>Nauryz</i> – the Central Asian pre-Islamic New Year's celebration—in March/April 2008. The mission of these tours, sponsored by the Central Asian Cultural Exchange (CACE) of Washington, DC, is to further cross-cultural understanding between America and the culturally Muslim regions of the former Soviet Union through exchanges in the arts.</p> <p>The musical group was formed in Almaty, Kazakhstan in 1991 under the leadership of Ruslan Kara, who sought to create new music using motifs drawn from Eurasia's indigenous religions traditions. Roksonaki pioneered the creation of arrangements that integrate ancient Kazakh instrumentation –the traditional <i>kylkobyz</i>, <i>shankobyz</i>, <i>sazsyrnai</i> and <i>dombra</i>—and contemporary rock music and jazz. This fresh approach immediately attracted attention netting them the prestigious <i>Aziia Dausy/Voice of Asia Award</i> at the very outset of their career. Roksonaki first performed in America in 2002 and has played in festivals in Canada, Germany, Turkey and several former Soviet states.</p> <p>Three musicians bring to campus an evening of lecture, demonstrations, and performances. They travel with their producer/ translator, as well as a U. of M. trained anthropologist, Helen Faller.</p> <p><i>"Roksonaki may be the most interesting avant-garde band to come out of Central Asia since the Soviet Union's</i></p>	<p><i>Focus East Asia</i></p>

	<p><i>collapse in 1991. Bringing the 13th century into dialogue with the 21st, their unique sound fluently and joyfully combines elements of ancient nomadic Kazak traditions—reed flutes and throat-singing—with contemporary rock and jazz. Roksonaki are musically fluid and as at home playing rock and roll as they are improvising new classical motifs with Yo-Yo Ma.”</i></p> <p>Helen M. Faller, Ph.D., Cultural Anthropologist/ Specialist in Central Eurasian Arts Exchange</p> <p>More information: www.mosaiqa.com/roksonaki Samples of Roksonaki’s music may be heard at www.myspace.com/roksonaki</p> <p><i>The Focus East Asia Presentation Series is sponsored by the Schoolcraft College International Institute and supported by a grant from the Schoolcraft College Foundation</i></p>
<p>March 20 Thursday 10-3 PM DiPonio Room VisTaTech</p>	<p>MULTICULTURAL FAIR <i>Multicultural Fair</i></p> <p>The Multicultural Fair, now in its 7th year, is a vibrant celebration of the wide variety of cultures on our Schoolcraft College campus which features:</p> <ul style="list-style-type: none"> ○ More than 2 dozen country displays where students actively share their culture and answer questions ○ Performances which run continuously and feature dance, music, art and poetry ○ Language demonstrations ○ Demonstrations of origami, henna painting and yoga ○ Cross-cultural snacks from a variety of ethnic cuisines provided free by area restaurants. ○ “Passports” issued at the door to “travelers” can be “stamped” by each country table they visit. <p>Besides promoting cultural sensitivity and increasing an awareness of and appreciation for other cultures, the Fair extends education beyond classroom walls by exposing students, faculty and staff to a cross-cultural experience. Most importantly, it creates an opportunity for students to teach others.</p> <p style="text-align: center;">Created for students and community by students and community, this event is ~ free of charge and open to the public ~</p> <p style="text-align: center;">Be a part of the Multicultural Fair! Contact Laura Leshok in Counseling, lleshok@schoolcraft.edu / 734 462-4400, ext. 5203 or Josselyn Moore, LA 575 jmoore@schoolcraft.edu / 734 462-4400, ext. 5271</p> <p style="text-align: center;"><i>The Multicultural Fair is co-sponsored by the Schoolcraft College International Institute, Student Activities and Phi Theta Kappa, and is supported by a generous grant from the Schoolcraft College Foundation.</i></p>
<p>March 24-27</p>	<p>ALIVE ON THE ANDREA DORIA! THE GREATEST SEA RESCUE IN HISTORY <i>Pageturners</i> by Pierette Domenica Simpson</p> <p>Recollections and Revelations! One-half century later, the catastrophic ramming of the MS Stockholm into the Italian luxury liner Andrea Doria in July 1956 is relived in this candid, heartrending account. Author and survivor Pierette Domenica Simpson shares the human and technical aspects of what has become known at the "greatest sea rescue in history" and provides the general public, for the first time, with truth about the error that led to the collision.</p> <p>Campus Sponsor: Marjorie Nanian</p> <p>Mon. March 24 6:30-7:30 p.m. L 116 Tues. March 25 1:30-3:00 p.m. MC 200 - Author’s visit to SC Wed. March 26 12:00-1:00 p.m. L 116 Thurs. March 27 5:30-6:30 p.m. RC Lib.</p>
<p>March 27 Thursday 6:00 PM Presentation Room VisTaTech</p>	<p>FAREWELL MY CONCUBINE/ BA WANG BIE JI <i>International Film Festival</i></p> <p>In Chen Kaige’s adaptation of the Lilian Lee novel, Cheng Dieyi (Leslie Cheung) and Duan Xiaolou (Fengyi Zhang) grow up enduring the harsh training of the Peking Opera Academy, where instructors regularly beat the children as a means of instilling in them the discipline needed to master the complex physical and vocal technique. As the two boys mature, they develop complementary talents: Dieyi, with his fine, delicate features, assumes the female roles while the burlier Xiaolou plays masculine warlords. Their dramatic identities become real for Dieyi when he falls in love with Xiaolou; the resolutely heterosexual Xiaolou, however, marries a courtesan, Juxian (Gong Li), creating a dangerous, jealousy-filled romantic triangle. Spanning 50 years from the early part of the 20th century to the tumultuous Cultural Revolution, Kaige’s passionate, exquisitely shot film captures the vast historical scope of a changing world (and the mesmerizing pageantry of the opera) while also providing the intimate and touching details of a unique,</p>

	<p>tender, heartrending love story. [<i>Rotten Tomatoes</i>]</p> <p>This award-winning film was nominated for 2 Oscars and garnered another 13 wins including</p> <ul style="list-style-type: none"> • Palme d'Or, Cannes Film Festival, 1993 • Best foreign language film, Golden Globe Awards, 1993 <p>The film will be introduced by Helen Dituras, an Instructor in English at Schoolcraft, who is currently completing her doctorate in film at Wayne State University.</p> <p>Language: Mandarin Rating: R for strong language and depiction of thematic material Runtime: 156 minutes Release: 1993 (USA)</p> <p>For more information: http://www.imdb.com/title/tt0106332/</p> <p style="text-align: center;"><i>The Focus East Asia Presentation Series is sponsored by the Schoolcraft College International Institute and supported by a grant from the Schoolcraft College Foundation.</i></p>
<p>March 31 Monday 1-2:30 PM MC 200</p>	<p>THE WAY OF THE BRUSH AND THE SWORD: NEO-CONFUCIANISM IN THE WAY OF THE SAMURAI</p> <p>Steven Patterson Assistant Professor, Philosophy Marygrove College, Detroit, MI</p> <p style="text-align: right;"><i>Focus East Asia</i></p> <p>The samurai, the warrior caste of pre-modern Japan, are among the most intriguing figures in world culture. Westerners, in particular, have found the image of the samurai to be compelling. Film has done much to fuel this fascination. Recent movies such as “The Last Samurai” and “Ghost Dog” have traded explicitly on, and have to some degree romanticized the idea of <i>bushido</i>, the way of the samurai. The picture that emerges from such films is one of a vaguely ascetic spirituality combined with a terrific prowess in the martial arts. While it makes for great film, the result is very often misleading as to what samurai life, culture, and philosophy were really like. Further complicating matters are the somewhat casual appropriation <i>bushido</i> by many contemporary martial arts organizations and the checkered history of <i>bushido</i> within Twentieth Century Japan itself.</p> <p>So what is <i>bushido</i>, really? How does it fit within Japanese culture? What aspects of it, if any, are relevant to contemporary American culture? What is its connection to the practice of the martial arts? In this talk Dr. Patterson will attempt to address these questions by giving a brief intellectual history of <i>bushido</i>, paying special attention to its roots in neo-Confucian philosophy.</p> <p>Steven Patterson is an Assistant Professor of Philosophy at Marygrove College in Detroit, MI, where he teaches world philosophy, ethics, and political philosophy. He has been training in Japanese martial arts for over 15 years.</p> <p style="text-align: center;"><i>The Focus East Asia Presentation Series is sponsored by the Schoolcraft College International Institute and supported by a grant from the Schoolcraft College Foundation.</i></p>
<p>April 17 Thursday 10-11:30 AM LA 200</p>	<p>INSIDE ASIAN IMAGES: WHAT THE CONTENTS OF STATUES TELL US ABOUT CHINESE RELIGION</p> <p>James Robson, Assistant Professor Department of Asian Languages and Cultures University of Michigan</p> <p style="text-align: right;"><i>Focus East Asia</i></p> <p>Museums throughout the world are filled with a variety of Asian religious images and icons, depictions of Buddhas, guardian deities, and saintly figures, which are usually rendered in stone, metal, wood, clay or lacquer. The Chinese icons and images in those collections tend to be examples of what is termed “elite” or “high” art and are often representations of gods and deities from a standard pantheon comprised of popular national deities and common Buddhist figures. It is now clear, however, that a different class of images and icons also circulated at a more diffused level of society and we are now also aware of a variety of images that were filled with different kinds of contents. In this talk I intend to ask what can we learn when we shift our gaze from external aesthetics to explore what is found inside images?</p> <p>Professor Robson specializes in the history of Medieval Chinese Buddhism and Daoism and is particularly interested in issues of sacred geography, local religious history, talismans, and the historical development of Chan/Zen Buddhism. He is the author of several articles and is presently completing a book manuscript entitled <i>Power of Place: The Religious Landscape of the Southern Sacred Peak in Medieval China</i>. He has also been engaged in a collaborative research project with the Beijing bureau of the École Française d'Extrême-Orient studying local religious statuary from Hunan province. Dr. Robson earned his PhD from Stanford</p>

	<p>University in 2002.</p> <p><i>The Focus East Asia Presentation Series is sponsored by the Schoolcraft College International Institute and supported by a grant from the Schoolcraft College Foundation.</i></p>
April 21-24	<p>Kabul Beauty School: An American Woman Goes Behind the Veil By Deborah Rodriguez <i>Pageturners</i></p> <p>In 2002, just months after the Taliban had been driven out of Afghanistan, Rodriguez, a hairdresser from Holland, MI, joined a small nongovernmental aid organization on a mission to the war-torn nation. That visit changed her life. In <i>Kabul Beauty School</i>, she chronicles her efforts to help establish the country's first modern beauty school and training salon; along with music and kite-flying, hairdressing had been banned under the previous regime. This memoir offers a glimpse into a world Westerners seldom see—life behind the veil.</p> <p>Campus Sponsor: Anna Maheshwari</p> <p>Mon. April 21 6:30-7:30 p.m. L 116 Tues. April 22 1:30-2:30 p.m. L116 Wed. April 23 12:00-1:00 p.m. L 116 Thurs. April 24 6:30-7:30 p.m. RC Lib.</p>

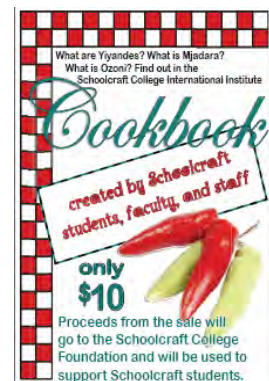
Preview: Coming to Campus Soon

Coming in 2009	<p>FOCUS SOUTH ASIA</p> <p>In 2009, stay tuned as our focus remains in Asia, but shifts to South Asia, an area which includes India, Pakistan, Bangladesh, Nepal, and Sri Lanka.</p> <p><i>This series is sponsored by Schoolcraft College International Institute and supported by a grant from the Schoolcraft College Foundation.</i></p>
-----------------------	---

International Cookbook

INTERNATIONAL COOKBOOK

The Schoolcraft College International Institute Cookbook is a Schoolcraft College product from to finish. The recipes were contributed by our campus community and the book designed by students. Recipes from all over the world are accompanied by information on the geographic and ethnic cuisine of featured regions. This is a perfect gift -- just \$10, including tax -- for those hard-buy-for people. Proceeds go to the Schoolcraft College Foundation which supports student scholarships and college projects. Get your copy today at the Schoolcraft College Bookstore.



start
to-

For more information contact Elzbieta Rybicka, Editor

This season the Schoolcraft College International Institute partners with ~

- Pageturners
- Learning Support Services
- Phi Theta Kappa
- Student Activities

~ and gratefully acknowledges the generous support of the Schoolcraft College Foundation ~