


# TRANSITION



SCHOOLCRAFT COLLEGE 2006-2007

The background of the image is a close-up of water droplets on a surface. The top portion is a solid blue color, which transitions into a white background in the middle section where the text is located. The bottom portion is a dark, almost black background. The droplets are of various sizes and are scattered across the entire image, creating a textured, reflective effect.

*“Not everything that is faced can be changed, but  
nothing can be changed until it is faced.”*

*James A. Baldwin*

# BOARD OF TRUSTEES



Gregory J. Stempien • CHAIR



Brian D. Broderick • VICE CHAIR



Carol M. Strom • SECRETARY



Patricia Watson • TREASURER



Conway A. Jeffress • PRESIDENT



Mary Breen • BOARD MEMBER



Philip N. Cascade • BOARD MEMBER



Joan A. Gebhardt • BOARD MEMBER

*Dear Friends,*

*As citizens of southeastern Michigan, we know these are unsettling economic times, and we frequently hear doomsayers predict dire consequences for the state. In a recent report from the Southeast Michigan Council of Governments, the words “poor” and “deteriorate” were prominent in comments, and are characteristic of popular assessments. We are in transition, and that can be a painful process.*

*However, as employees of a vibrant and involved community college, we know that is not entirely the case. We see that we change things – one individual at a time – and that those individuals change their families, their neighborhoods, their towns and the state.*

*On the pages of this report, you will meet some of the people who have changed their circumstances because of their time at Schoolcraft. While we do not claim nor have any illusions that the College or these individuals will turn our state’s economy around single-handedly, we know that changes coming one by one, multiplied by many, do make an impact.*

*We hope you agree with our approach – realistic but with real reason to be hopeful.*

*Schoolcraft College Board of Trustees*

## WORKERS IN TRANSITION

Mental health professionals tell us that losing a job is one of life's biggest stressors, akin to a death in the family or a divorce. Whether its cause is downsizing, globalization, mergers or market forces, the effect of job loss on an individual can be devastating.

To give laid-off workers tools for re-entering the job market, Schoolcraft College sponsored three Workers in Transition sessions. The sessions were free, included a pizza-and-pop meal, and gave participants an overview of how to approach finding another job.

Dan West, president of the Livonia Chamber of Commerce, Dianne Cojei, president of the Canton Chamber of Commerce, and Whitney McClellan, executive director of the Greater Novi Chamber of Commerce, each addressed one session, spelling out the job climate and opportunities in their areas.

Follow-up activities included resume writing and interviewing workshops, one-on-one counseling, career exploration and testing, and a self assessment inventory. Altogether, about 100 people took advantage of the College's services, all of which were free.

The feedback was uniformly positive. Many participants were reassured to meet others in the same position, and to know there were proactive things they could do and choices they could make.





## IN ON THE GROUND FLOOR

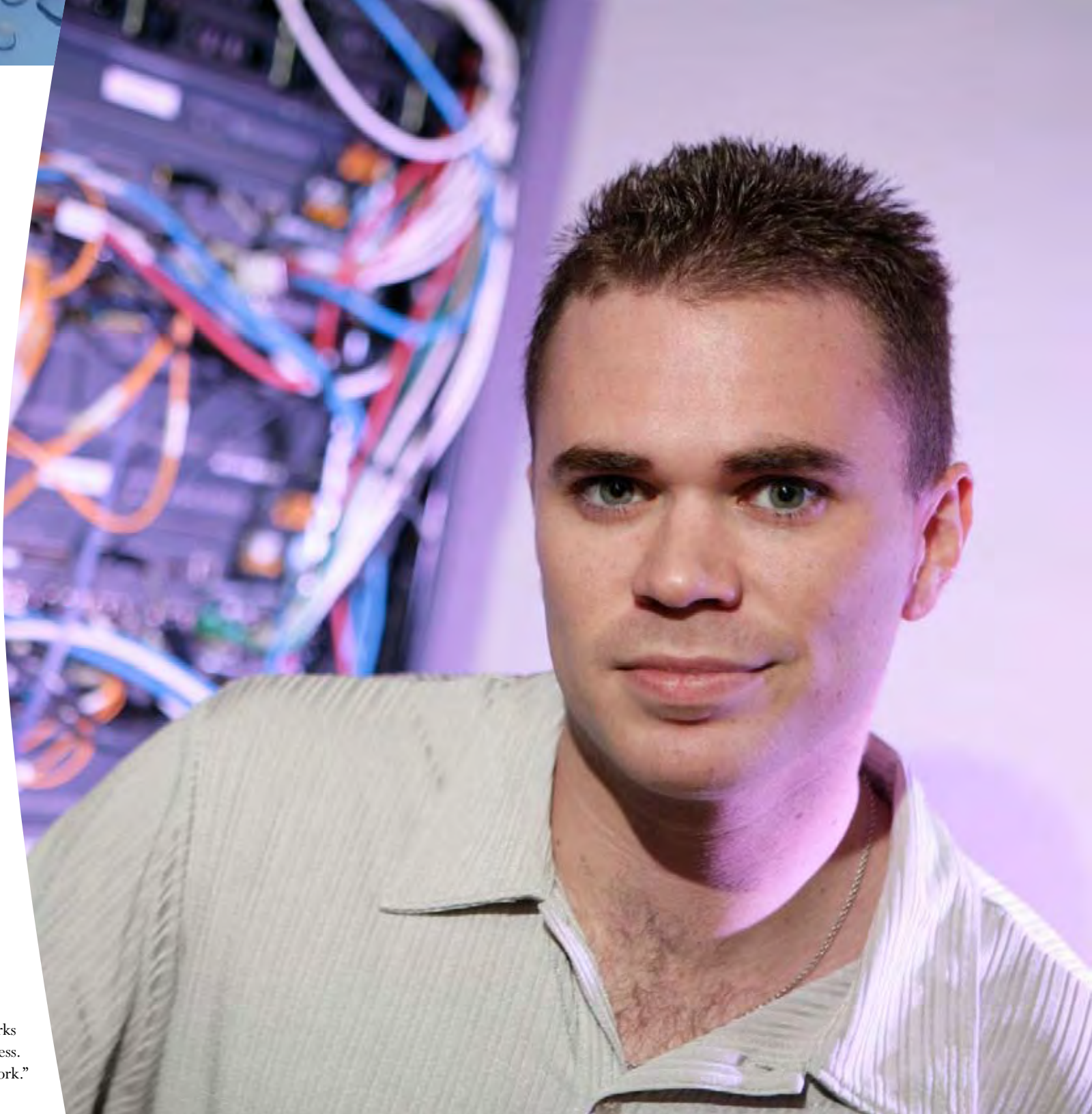
Google's new facility in Ann Arbor caused great excitement in Michigan. Robert Clifton, a Schoolcraft graduate, shared that excitement and then some. Clifton is one of the first 100 local employees Google hired, and foresees more opportunities opening up because of being on board early.

"It's important to be in on the ground floor," said the Google information technology technician.

Clifton said attending Schoolcraft was a great stepping stone in his career, because he could work full time, take classes online and in the open entry/open exit format, and earn his degree. His jobs tended to be low-end, low-paying, and the more classes he took, the more he began to see the value in a degree. Now he's working on his bachelor's.

Landing the Google job wasn't easy. He went through at least seven interviews on the phone and in person, and said Google is very particular about who it hires. New Google employees, known as Nooglers, must fit into a culture that includes working and playing hard, being very dedicated, and helping move Google ahead.

Clifton sets up and services the computers and communication infrastructure at the Ann Arbor site and a small Detroit office. "It's unlike any other job I've had," he said. "Google has a different culture. Food is free, there is a game room to relax. Everyone works extremely hard, but there is a lot of playfulness. It's a radical idea to make people happy at work."



## BUILDING FOR THE FUTURE

STEM and GRIN are acronyms you will hear more and more around campus. They refer to science, technology, engineering and mathematics for STEM, and genetics, robotics, information systems and nanotechnology for GRIN. They relate to the new \$12.5 million, 48,000-square-foot Biomedical Technology Center and what many see as a new direction for the state's economy.

College planners believe creating an integrated environment combining modern biology, nanotechnology, information sciences, the physical sciences and engineering will produce a cadre of professionals able to fit into the knowledge-based labor market. This will be especially true in meeting the growing personnel needs in the medical system.

Students will get hands-on training in their lab classes, with instruments that replicate what they will deal with in a clinic or hospital. Curriculum changes developed in partnership with industry will create advanced courses that meet the demands of the local economy and strengthen the connection between technology, math and the sciences.

In addition to partnering with industry, the College is developing agreements that will create a seamless student transition from high school, through two- and four-year colleges and into the workforce.

Lastly, the new learning opportunities will attract students who might not otherwise consider college or displaced workers who are seeking new careers. The new facility also will offer training and in-service for employees in partner institutions.



# A PASSION FOR SUPERB FOOD

Destination restaurants add to an area's economic viability and quality of life. As chef at Andiamo Dearborn, Jim Oppat is the front-line man, the guy who puts it all together and makes it happen. If the chef is successful, the restaurant thrives and the area benefits.

Oppat started as a dishwasher at age 14 and as a teenager worked with graduates of noted culinary programs. By the time he entered Schoolcraft's Culinary Arts program he had been in the restaurant business for 10 years and realized that being a chef was "an upscale profession, not something you do because you can't do anything else."

Schoolcraft solidified his culinary knowledge and gave him the confidence to compete with the best. "Schoolcraft set a level of standard every day, and there was no variance from it. Working with Certified Master Chefs makes you step up and re-evaluate everything you do."

Oppat said his work is characterized by attention to detail, sound fundamentals and a passion for the work that shows every minute of every day. Often he moves out of the kitchen, to greet and chat with his guests, distinguishing the restaurant from its competitors.

After Oppat graduated he worked for one of his instructors, and now he said he is in a position to make the same offer to others. He wants to surround himself with the best talent, and already has hired three Schoolcraft graduates.



## GROWING A FAMILY BUSINESS

Beth Patton likes her family-run business, the one she has operated for the past 18 years. She likes being in control of her own destiny and being able to conduct business on a personal level, where you know, and get to celebrate, every client's birthday.

Beth and members of her family own and operate Adventures in Learning Preschool, a child care center in Livonia. When Beth decided to expand from providing family day care to six children in her home to being licensed for 60 children in a separate facility, she looked to Schoolcraft for help.

Her first move was to sign up for a Schoolcraft entrepreneur class where she learned to write a business plan that helped her win city approval. For the state to recognize her as a child care center director, she needed 12 credit hours of child care and development training. Once again, she came to Schoolcraft and began taking classes in January 1998, earning an associate degree in 2000.

Her daughter, Jillian Toth, also earned an associate degree in child care and development at Schoolcraft in 2004. Jillian became center director in October 2006. The Center employs a staff of a dozen full-time employees.

Beth said the Schoolcraft instructors inspired her, and now she passes her knowledge on to the parents of the children she cares for in her center.



## JAZZY ECONOMICS

Economics isn't always about making and buying and selling. Sometimes it has to do with laughing and hugging and talking and spectacularly fine music.

Hosting the Michigan Jazz Festival each July has been a Schoolcraft tradition since 1999. Between 5,000 and 6,000 people come to the campus to enjoy almost 30 bands that perform on five stages. The music goes on from noon until late evening, and with the opening of the VisTaTech Center and its large indoor areas, some guests stay the better part of the entire day.

Economically, people from Canada, Toledo, Grand Rapids, Port Huron and points beyond get an introduction to area restaurants, shops and hotels. While there is no charge for admission or parking, the musicians, who are all from southeast Michigan, are compensated. Their contact information is listed in the program for booking purposes, and they can sell their CDs to patrons without the Festival sponsors asking for a percent of sales revenue.

Festival organizer Midge Ellis, known locally as Ma Jazz, said fans of jazz are some of the friendliest people around and easily strike up conversations. Ellis said many a business deal has been struck at the Festival or as a result of chance meetings there. Disc jockeys from local radio stations regularly attend, gathering new sounds to weave into their on-air musical lineup, again promoting local performers.

In addition to the seasoned pros, the 2007 Festival included three gifted jazz students, aged 13 to 17, who each had 15-minute gigs with the pros. The beat, indeed, goes on.



## FINDING THE ARTIST WITHIN

David Parr claims he had never been artistic nor been around the arts. Then he took a “right turn” in his life – right to the Schoolcraft Continuing Education and Professional Development Department’s ceramics classes. This year, he created a piece that the College purchased and will hang in its permanent art collection.

Parr owned an insurance agency and was chairman of the board at St. Mary Mercy Hospital in Livonia for four years, where he is still a board member. “I was used to doing things in a corporate way – being in charge,” he said. Then he retired and took a CEPD ceramics class, which led to more classes where teachers encouraged him to develop his talents, which led to the uncertain world of for-credit classes.

“Credit classes for marks were a huge jump,” he said. “I was competing against 19-year-olds who were coming out of good arts programs at their high schools. I was the oldest person in class. I was older than the instructor. It was intimidating.”

There were huge struggles, a huge amount of learning and huge failures, he said. Now he is firmly planted in the artistic community, stating that, “Clay is my medium.” His home studio is complete with a kiln and potter’s wheel.

“Ideas come to me all the time,” Parr said. “I look at things and wonder how they would look in clay. It’s been a tremendous struggle,” he said. “But what a thrill. I’m having a great time.”



# A GRAPHIC TRANSITION

Rarely is the path to our destination a straight line. Martin Smith made the transition from his planned career as a high school teacher to an art director working for Hour Media Company, publisher of several magazines including *Hour Detroit*.

Smith always had interests in art and in computers. After earning his bachelor's degree in political science, he decided to try computer graphics technology (CGT) instead of earning his teaching certificate. While teaching in an art store, he met a fellow art instructor who was in the Schoolcraft program, and subsequently enrolled.

Smith earned an associate degree in CGT, and found that the Schoolcraft program gave him the right technical skills to perform well at a job and to advance. After one and a half years at Hour Media, his duties have expanded to directing photo shoots, illustrating, page layout, and branding for collateral marketing materials.

He would love to have his own design studio one day, but now he is quite happy with his job. He also recognizes that things are always in flux, especially in the high tech world he inhabits, so he is learning about screen design, which, he said, is the next trend.



## A TAXING SOLUTION

It pays to take the initiative. Just ask Jaime Finfrock, a Schoolcraft student and community volunteer who was instrumental in winning a \$1,000 grant to expand a program that trains Schoolcraft accounting students how to help low-income families prepare their tax returns.

Several college offices collaborate with two local non-profits and the Internal Revenue Service's Volunteer Income Tax Assistance program to make the tax preparation assistance possible. It was Finfrock's idea to expand the program by applying for a grant from the Jimmy and Rosalynn Carter Partnership Foundation.

She sought advice from the College's grants director and then wrote the grant application herself. Her winning proposal netted \$1,000, which was used for mailings, training materials and food during the volunteers' training and preparation.

Nearly 100 people completed their tax returns with the help of 60 volunteers. It was Finfrock who trained those volunteers; she also reviewed each tax return for accuracy. Her satisfaction was double: she helped students learn the tax process and offered clients a valuable free service.

Finfrock knows she will always be heavily involved in volunteer work. In the meantime, next year she is aiming for a \$10,000 grant for the program.



## THE RIGHT MOVE

When Lynne Olderman's job moved out of state she had the chance to go with it. But that would have meant uprooting her family and starting over someplace new. Instead, she chose to stay put and start over with a new career.

After 18 years as an airline reservation specialist, Olderman is in her second year as a Health Information Specialist at St. Joseph Mercy Hospital.

Olderman started the transition by researching careers that are in demand. Through government Web sites she learned that job opportunities are plentiful in health care. "I really didn't want hands-on stuff," she said. "I discovered Health Information Technology, searched the Web for local programs, and found Schoolcraft."

She eased into the program, taking one class her first semester. "I was almost 40 when I started. I didn't think I could start anything new," she said. Succeeding in that first class was the boost she needed. "I realized, 'I can do this. I like it, it's interesting, and I'm catching on.'" She took a full load the next semester and never looked back, earning an associate degree in two years and landing her job within two months of graduation.

Her advice for others considering a new career? "Just do it. You will surprise yourself. I wish I had done it earlier."



## MAKING MUSIC PAY

Nancy Whitecar has been a pianist all her life, taking lessons, performing and accompanying. But she did not feel qualified to teach piano; she did not have what she calls “the toolbox to be a teacher of piano.”

With a degree in advertising, she had worked in employee relations and communications, had been a stay-at-home mom, and had taken on a few piano students. Other area piano teachers urged her to enroll in Schoolcraft’s Piano Teacher Certificate Program.

“I went from accepting a student or two from friends to having a professional studio, policies, schedules, calendars and set fees. My studio is run like a business,” she said. “In one of my courses, the very first thing the instructor mentioned was the business of running a studio.”

“The Schoolcraft program is a combination of skills you must practice and demonstrate, combined with the knowledge of music history, music appreciation, how to teach and what kinds of things work with students. You may have played a bit or may be a very good pianist, but this is college-level learning.”

Now, Whitecar has more than 20 students, is confident in her teaching and feels qualified to send her students to piano festivals. She met other piano teachers in the program and networked with colleagues. She said she loves the community college, with its atmosphere that places her, a late-30s-something woman building a career, next to an 18-year-old just starting out, and sharing ideas with everyone.



## TAKING THAT LEAP OF FAITH

Brian Kimball was in retail for 30 years, as an assistant vice president with one company and a director of stores with another. But part of him always wanted to run his own business, and on his fiftieth birthday he took a leap of faith.

Time Too Savor is a meal preparation business, where customers assemble ingredients prepared by Kimball's staff to make meals they take home, freeze and cook individually. Clients choose from menu items such as steak Caesar, chicken satay stir fry, pork Vera Cruz or shrimp quesadillas.

Kimball did his homework. After reading about meal prep franchises in *The New York Times*, he wrote a business plan, looked at demographics, created a logo, decided upon a Web site, and researched the advantages and disadvantages of owning a franchise.

For help, he contacted the Schoolcraft Business Development Center, and got advice in developing his business plan, understanding his financing and marketing.

The business is a year old. He opted not to purchase a franchise, but to truly have his own business, and his goal is to have multiple stores in the metro Detroit area.

"I took a leap of faith," Kimball said. "Not taking the leap and always wondering 'what if?' would have been worse."



## GIVING BACK WHAT ISN'T QWED

It was one scholarship—just one out of the 100 that Art and Diane Rockall's three endowments have distributed to Schoolcraft students over the past 12 years. However, the money enabled Carol Guenzel to pay for one class, continue her studies, and save up her own money to pay for classes the following semester.

That was 11 years ago, and this spring Guenzel decided to give something back. At a reunion dinner organized by the Rockalls to meet their scholarship recipients, Guenzel surprised the couple with a check to pay back the original award.

The Rockalls had no idea they would get money back and found it a genuine surprise. They returned the money into the scholarship fund. "The Rockalls are wonderful people, and if I can give something back so they can help someone else, it's a great thing," said Guenzel.

Guenzel is a fine arts major at Wayne State University, concentrating in sculpture. Before that she was an automotive mechanic, working on prototype military vehicles, a postal employee, a car salesperson and an office manager. But having grown up in a large family, there was no chance for her to go to college right out of high school.

"I love going to school," she said. "I wanted to do something with myself, but what I did was never a waste. It was all part of my pathway."



# COLLEGE Financial Report

## July 1, 2006 – June 30, 2007

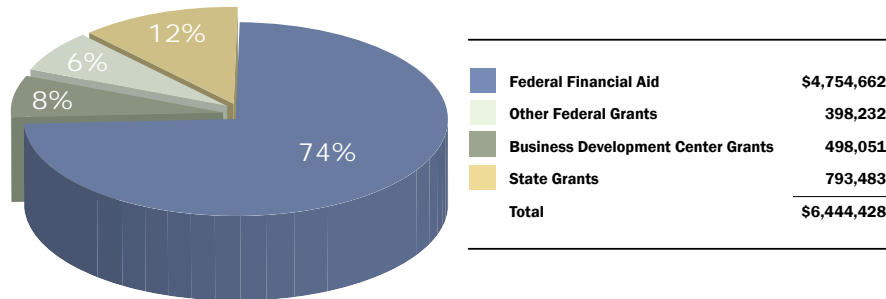
The College ended the 2006–2007 fiscal year with general fund revenue of approximately \$63.7 million and general fund expenditures and transfers to other funds of approximately \$63.5 million.

From fiscal year 2005–2006 to fiscal year 2006–2007, property taxes increased five

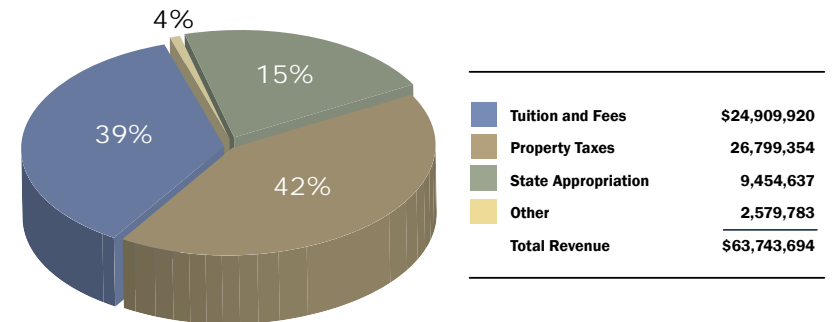
percent because of new construction in the district and inflationary increases in taxable values. Tuition and fee revenues were higher due to a 6.7 percent enrollment increase. Investment income grew as interest rates climbed. However, state appropriations were reduced by \$1.7 million or 15.5 percent.

The College continued its technology replacement program and continued to update and maintain its buildings. Construction of the Biomedical Technology Center is under way with plans to open for classes in the Fall of 2008.

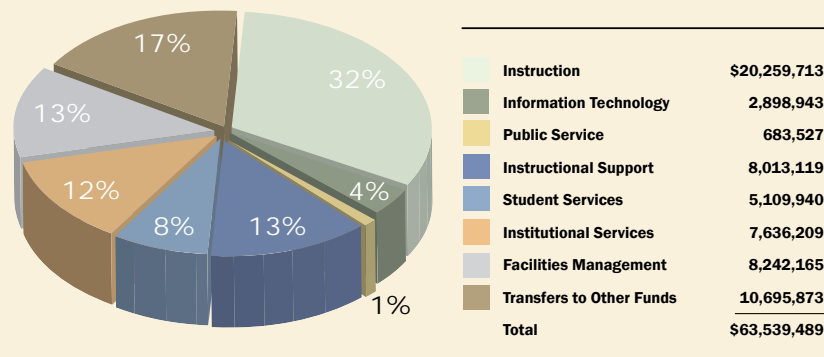
Grant Funding 2006–2007



General Fund 2006–2007



General Fund Expenditures 2006–2007



# FOUNDATION

Since 1966, the Schoolcraft College Foundation has partnered with its donors and the community to transform the lives of Schoolcraft students. The Foundation provides essential scholarship support to remove the financial barriers that often prevent individuals from pursuing higher education. Additionally, the Foundation provides grant funding for innovative and emerging initiatives developed by our faculty and staff for the benefit of the campus community, and occasionally, support for capital projects such as the VisTaTech Center in 2002, and the Biomedical Technology Center in 2008. The funding priorities of the Foundation are grounded in the firm belief that higher education should be accessible to our constituents.



## ALUMNI AND FRIENDS PROGRAM CONTINUES TO GROW

True to its strategic plan, the Foundation recently launched the most comprehensive alumni communication and outreach effort in the history of the College. With a goal to strengthen ties between alumni and the College, roughly 28,000 alumni surveys were mailed to Schoolcraft graduates and certificate holders living in all fifty states.

Additionally, in an effort to reach out beyond graduates and certificate holders to include the College's entire family of alumni and friends, an electronic version of the survey has been made available and can be accessed via the new Alumni and Friends homepage. Both surveys are designed to determine the ways in which alumni would like to maintain ties with the College.

Tapping into the enthusiasm of alumni who date back to the first graduating class of 1964, Foundation staff will use survey findings and focus groups to develop a dynamic program created uniquely for and by Schoolcraft College alumni. To expand on these efforts, an alumni advisory committee has been formed to provide guidance and support as the program evolves. Presently, the committee is represented by members from the Schoolcraft College Foundation Board, College staff, current students and most importantly, Schoolcraft alumni. Plans are currently underway for the Alumni and Friends program to host its first major event, an "Alumni Reunion" expected to be attended by Schoolcraft's extended family of alumni, friends, faculty, staff, and current students.

## HENRY ROWE SCHOOLCRAFT SOCIETY

The Henry Rowe Schoolcraft Society was established to honor donors who make gifts in special ways. Society members are recognized for their support of the College and Foundation through planned gifts. The many vehicles of planned giving include bequests, pooled income funds, charitable gift annuities, charitable

remainder trusts, and insurance programs. Making a gift through the Henry Rowe Schoolcraft Society is a way of planning for the College's future along with your own. These gifts are critical in ensuring that student needs will be met now and in the future.

CHARLOTTE ANDERSEN

ROBERT K. &  
BETTY BARBOUR

ROBERT K. &  
LORAIN S. BARBOUR

LEE & JUDY BRDA

JAMES BROWN

GEORGE L. CLARK

ANNA CONLEY

YALE & BETTY CONROY

EDNA LUTHS CRAWFORD

CLAUDE & HELEN  
ECKELS

ROBERT FEINBERG

MAUREEN FOLEY &  
C. JOHN BLANKLEY

ROCCO GARRITANO

FLORENCE HARRIS

RAYMOND &  
RUTH HEYMAN

MARY JO HEWITT

LAWRENCE &  
CHRISTINE HINKLE

FLOYD &  
MARIAN KEHRL

ANNETTA KELLY

JUNE &  
LEO MAINVILLE

MICHELE E. MARTIN

RITA PERDUE

STEPHEN RAGAN

JAN & NELLY REEF

ART & DIANE ROCKALL

RUTH SHATTUCK

ROGER &  
MARY SUTHERLAND

JOHN &  
CAROLYN TOMNEY

JASON H. &  
ELIZABETH A. VALENTE

HENRY &  
WANDA WOJCIK

JERRY YOUNG



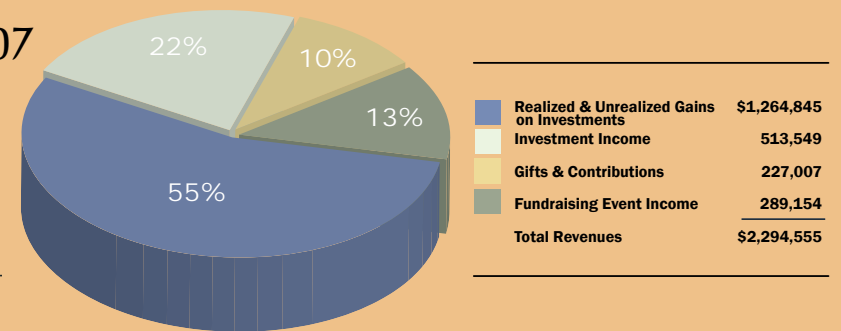
# FOUNDATION Financial Report

## July 1, 2006 – June 30, 2007

The Schoolcraft College Foundation continues to meet and exceed its financial goals in spite of an uncertain economy. The success of the Foundation rests on the

generosity of its many supporters, the hard work and dedication of its Board of Governors, and the commitment of its relentless volunteers and dedicated staff.

Foundation Revenues 2006–2007



## CAMPUS GRANTS

Schoolcraft College faculty members are dedicated to expanding their students' intellectual and practical potential. In the classroom, they often lead in partnerships of discovery, structuring the quest so that students take ownership of the ideas they discover or develop. To that end, the Foundation has long recognized the need for supplemental funding for emerging or innovative initiatives developed by our faculty and staff.

These grants provide our students and the campus community with exceptional learning experiences—"academic out of the box" experiences—that may not have been possible in these times of state and federal budget reductions. The College often leverages these grants to secure additional funding through matching gift programs from public and private sources. In 2006-2007, the Foundation awarded grants totaling \$84,000, bringing the total of Foundation awarded grants to over \$1,000,000 in the past 20 years.

Examples of previous grants include a textbook assistance fund, college readiness programs, the Multicultural Fair and learning assistance resources.

The Foundation has pledged \$1,500,000 toward the cost of the College's Biomedical Technology Center, which is scheduled to open in the Fall of 2008. The Foundation pledge, together with an appropriation from the State of Michigan along with College funds, will allow the College to remain debt free upon completion of the Center.

# SCHOLARSHIPS

One need only look at the newspaper to see the grim headlines of layoffs, plant closings and dismal housing forecasts. As the local economy struggles, our students bear the burden of making ends meet. As our enrollment continues to increase, so does the demand for financial aid.

While our tuition may be modest by some standards, many of our students simply could not afford a Schoolcraft College education

without some form of assistance. We view donor contributions as investments in our students, which yield long-term rewards and forge an enduring legacy in the lives of our students and in the future of our communities. Scholarships allow students to improve their careers, their lives and the lives of their families. Our donors make the dream of higher education a reality and the hope of a better future possible. In 2006-2007, the Foundation awarded scholarships totaling nearly \$400,000.



*Recipients of the Florence E. Harris Memorial Endowment epitomize academic excellence and enthusiasm for learning. Three of this year's awardees are profiled here.*

## Ruwantha Dewundara

Ruwantha left Sri Lanka and came to live in the United States after the death of his grandmother in the 2004 tsunami. Ruwantha lives with his aunt and uncle, and credits them with being the



most important influences in his life. He is active on campus and works with the Learning Assistance Center as a math and chemistry tutor. He also participates in the University Bound and International Student organizations. Ruwantha is in the engineering transfer program and plans to attend Wayne State University. His goal is to become an industrial manufacturing engineer, and eventually work his way up to a management level position.

This scholarship is very meaningful to Ruwantha since students with educational visas are not eligible for federal financial aid.

## Nichole Sobecki

Nichole just completed her first year in the culinary arts program. She was attracted to the program for its renowned faculty and reputation, and to Schoolcraft because her mother, an alumnus, had such a positive experience here.



Nichole's goal is to earn an associate degree and transfer to a university to earn a business degree. Ultimately, she hopes to work in the culinary field and combine her passion for cooking with her passion for living a healthy lifestyle through physical fitness and nutrition. Nichole is an active volunteer, participating in several Foundation events, and regularly volunteering at the Habitat for Humanity retail store. Nichole believes in hard work and never giving up, and views obstacles as examples of progress.

## Connie Vedrode

Connie always had the desire to help others. After losing her job in the automotive industry, she decided to pursue a career in caring. Inspired by her sister, a nurse for more than 30 years, Connie enrolled in



Schoolcraft's nursing program. Her goal is to work in neonatal or oncology nursing.

Connie has no plans to end her education after graduating from Schoolcraft. Once employed she plans to enroll in the bachelor of science in nursing program at Wayne State University. Connie has maintained a perfect grade-point average while attending Schoolcraft full time and raising her two-year-old grandson. Her advice to other students is to be patient, but persistent.

# DONORS

July 1, 2006 –  
June 30, 2007

Schoolcraft College and the Schoolcraft College Foundation Board of Governors are pleased to continue the tradition of recognizing our generous donors. **This listing recognizes contributions (including matching gifts and gifts-in-kind) donated directly to the Foundation between July 1, 2006 – June 30, 2007.**

We are mindful of the generosity of individuals that have helped to make scholarships, program enhancements and upgraded facilities available to our students.

In 2007, Schoolcraft College dedicated a permanent display recognizing our donors' contributions to the College. The display recognizes donors whose lifetime giving, including matching gifts, exceeds \$10,000.

We have done our best to accurately present this contributors list; however, in compiling a list of this size, omissions and misspellings sometimes occur. Please let us know of any errors. We appreciate the opportunity to correct our records. To make corrections or to inquire about the donor wall, please contact the Development Office at 734-462-4455.

## PLATINUM SHAREHOLDER

(\$5,000 +)

MARGARET A. ADAMS & ROLANDE KIROLJAC  
AT&T FOUNDATION  
WILLIAM H. BASSETT  
LADNER & MIDGE CARLETON  
CENTRAL DISTRIBUTORS OF BEER, INC.  
CONRAD CHARITABLE FOUNDATION  
OWEN & RUTH CUMMINGS  
ESTATE OF MARY JO C. HEWITT  
CHRISTINE M. HINKLE  
MARIAN KEHRL  
LASALLE BANK MIDWEST N.A.  
MICHIGAN EDUCATIONAL CREDIT UNION  
ABE & DARLENE MUNFAKH  
ROY L. & CHRISTINA RENNOLDS  
GEORGE & DOLORES RILEY  
SCRIPPS HOWARD FOUNDATION  
SODEXHO, INC. & AFFILIATES  
CRAIG & BARBARA WINN

## DIAMOND SHAREHOLDER

(\$2,500 +)

ANSARA RESTAURANT GROUP, INC.  
C. JOHN BLANKLEY & MAUREEN F. FOLEY  
CANTON COMMUNITY FOUNDATION  
CASEY PRODUCTS  
THE GROSSMAN COMPANY, LLC  
DAVID & FRANCES GROSSMAN  
TIMOTHY R. J. LAMBERT  
LOC PERFORMANCE PRODUCTS, INC.  
MAIN STREET BANK  
PLYMOUTH ROTARY FOUNDATION  
JOHN N. & JUDITH SANTEIU, JR.  
THE PAUL & MARLENE SERWINEK FOUNDATION  
ST MARY MERCY HOSPITAL  
U.S. FOOD SERVICE  
WALSH COLLEGE  
WESTLAND COMMUNITY FOUNDATION

## GOLD SHAREHOLDER

(\$1,000 +)

GEORGE G. AHO  
ALLIE BROS. INC.  
AMERICAN ASSOCIATION OF UNIVERSITY WOMEN  
PLYMOUTH-CANTON  
AMERICAN ASSOCIATION OF UNIVERSITY WOMEN  
NORTHVILLE-NOVI  
ARAMARK SERVICES  
ASIAN VILLAGE OF DETROIT

BACARDI USA  
BANFI VINTNERS  
ANN MARIE BERNARDI  
BETA ETA CHAPTER OF DELTA KAPPA GAMMA  
STEVEN L. BERG  
BIDIGARE CONTRACTORS, INC.  
BOCO ENTERPRISES, INC.  
BOLOVEN MOON, PC  
BRIGHT HOUSE NETWORKS, LLC  
BUTZEL LONG  
CANTON ROTARY FOUNDATION  
CORBY ENERGY SERVICES  
JOHN & JANET CRUSE  
CUMMINGS, MCCLOREY, DAVIS & ACHO, PLC  
DADCO, INC.  
DAUGHTERS OF THE AMERICAN REVOLUTION-  
JOHN SACKETT CHAPTER  
DAVID A. KUZDEK & ASSOCIATES, INC.  
MARK B. DICKOW  
DOUBLE H MFG., INC.  
FAUSONE BOHN, LLP  
FIRST PLACE BANK COMMUNITY FOUNDATION  
EDWARD J. FORSYTH  
FUND EVALUATION GROUP, LLC  
GALLAGHER FIRE EQUIPMENT  
GARDEN CITY HOSPITAL  
GEORGE W. AUCH COMPANY  
GREAT LAKES HOTEL SUPPLY  
NICK & CARLA GUERRO  
CHERYL M. HAGEN  
HERMAN'S CREATIONS LTD.  
THE HGA GROUP  
HOLIDAY CATERING  
INMARTGROUP LIMITED  
KATHERINE J. JANKOVIK-ANDERSON  
CONWAY & LOUISE JEFFRESS  
JOHN N. SANTEIU AND SON, INC.  
JOHNNY'S LUNCH  
JUNCTION 800 PROPERTIES LLC  
KOJAIAN COMPANIES  
LAUREL MANOR  
ARTHUR & KAREN LINDENBERG  
LIVONIA ROTARY CHARITABLE FOUNDATION  
LOU LARICHE CHEVROLET  
ESTATE OF J & L MAINVILLE  
THOMAS & DOROTHY MAREK  
CHARLES & BARBARA MCILHARGEY  
METROPOLITAN TITLE COMPANY  
DONALD L. MORELOCK  
MSU ALUMNI CLUB OF WESTERN METRO DETROIT  
NORTHVILLE GARDEN CLUB  
NORTHVILLE MOTHERS CLUB  
OBSERVER & ECCENTRIC NEWSPAPERS  
PATRICK O'NEIL  
PEPSI BOTTLING GROUP  
CATHERINE PERSICHINI  
PFIZER FOUNDATION MATCHING GIFTS PROGRAM  
THE PLUTT COMPANY  
PLYMOUTH ROTARY A.M. CLUB  
SHARON Y. POMPEY  
PORTOFINO RESTAURANT

RALPH C. WILSON AGENCY, INC.  
ROAMIN CLUB  
ARTHUR & DIANE ROCKALL  
ROUSH INDUSTRIES, INC.  
SANLIUS RASSINI INTERNATIONAL, INC.  
SCHOSTAK BROTHERS & COMPANY  
SHW GROUP, LLP  
JOHN & DENISE SIGWORTH  
SKYWAY PRECISION, INC.  
STERLING SERVICES  
STRATEGIC PUBLIC AFFAIRS  
MONICA S. SULLIVAN  
SUTHERLAND & YOE, PC  
SYSCO FOOD SERVICES OF DETROIT  
ROBERT TAMBORINI  
TCF NATIONAL BANK  
JAMES UTLEY  
VARSITY LINCOLN-MERCURY, INC.  
WALKON-ETKIN PARTNERSHIP  
WAL-MART STORE #01-3476  
JOHN & JANICE WALSH  
WEST METRO PRINTING  
WKRK 97.1  
WOLVERINE PACKING CO.  
MARIAN E. WRIGHT  
ZONTA CLUB NORTHWEST WAYNE

## SILVER SHAREHOLDER

(\$500 +)

7-UP  
ACRO SERVICE CORPORATION  
PAUL J. ANDERSON  
KEITH A. BECKER  
BELL & SONS  
BETH A. BESON  
BILL BROWN FORD, INC.  
RONALD W. BONATZ  
CRAIG & DIANE BOWLES  
PHILIP & SANDRA CASCADE  
COCONUT BAY DISTRIBUTORS  
COMPLETE INFUSION SERVICES, LLC  
TERENCE A. CONWAY  
JOYCE B. COSTANZA  
KAREN DIXON  
CHRIS & ELGENE DOINIDIS  
E. F. WHITNEY, INC.  
ROBERT & ELEANOR EMICK  
JAMES & NANCY ESKER  
JOHN FENECH  
FIFTH-THIRD BANK  
FRANKLIN BANK  
CARL & DOLORES FRICKE  
DOLORES C. GASKA  
GILMORE & LACIVITA & ASSOCIATES  
FRANK GUERRO  
H. W. BARKLEY CO.  
HAYMAN COMPANY

HCTC LLC  
MARTIN & CHERYL HEATOR  
DOUG HINKER  
KITCHEN, INC.  
LA BISTECCA ITALIAN GRILLE  
GERALD & ELAINE LAKER  
LIVONIA TROPHY SCREENPRINTING  
MACLEAN PROPPE MACLEAN & DARNELL, PC  
NEAL & ARCHANA MAHESHWARI  
WILLIAM C. MANASCO  
CANDIS M. MARTIN  
RICHARD & ANN McDOWELL  
MEADOWBROOK PRODUCTS  
MICHIGAN FEDERATION OF MUSIC CLUBS  
JOSSELYN MOORE  
MORRIS, KALISH + WALGREN, PC  
MORSE DENTAL GROUP  
MOTOWN H.O.G.  
MUCCI FOOD PRODUCTS, LTD.  
MUNFAKH & ASSOCIATES, LLC  
NBS  
NEW LIBERTY BANK  
NORTHVILLE WOMAN'S CLUB  
ORIN JEWELERS, INC.  
NICHOLAS & LINDA PALLAS  
PATRICK J. PARDO  
PLUNKETT & COONEY, PC  
PLYMOUTH JEWELRY & GIFTS INC.  
MICHAEL & MARSHA POLSINELLI  
PREFERRED BRANDS, LLC  
PSI  
ELDON & SANDRA RAYMOND  
RECREATIONAL LEISURE CORPORATION  
RENAISSANCE STRATEGIES, INC.  
ROCK FINANCIAL SHOWPLACE  
PETER ROESKE  
ROCHELLE R. SCHAFFRATH  
SCHOOLCRAFT COLLEGE-CONTINUING EDUCATION  
& PROFESSIONAL DEVELOPMENT  
SCHOOLCRAFT COLLEGE-  
CULINARY ARTS DEPARTMENT  
FAYE SCHUETT  
CHERYL B. SEIBER  
DONALD & CHERYL SNYDER  
SOHN LINEN SERVICE, INC.  
SOUND ELECTRONIC SOLUTIONS, INC.  
SHERRY L. SPRINGER  
BOB STOYANOVICH  
STREET MARKETING, INC.  
MIKE & JUDY SUMERACKI  
MATT SUROWIEC  
NANCY K. SWANBORG  
LINDA S. TALBERT  
TALON DEVELOPMENT GROUP, INC.  
KEITH TAPPAN  
TOWN & COUNTRY BIKE & BOARDS  
RONALD & BEVERLY VALENTE

JACK A. WASHKA  
PATRICIA L. WATSON & CHARLES L. JERZYCKE  
MATT WEST  
FRANK P. WILTRAKIS  
XUEREB SNOW PC  
JEFFREY L. ZANETTI

## CENTURY SHAREHOLDER

(\$100 +)

1ST SECURITY TITLE AGENCY, INC.  
A HELPING HAND PET SERVICE, LLC  
A. T. S., INC.  
MOHAMMED K. ABBAS  
CHARLOTTE P. ADAMS  
JOSEPH ADAMSKI  
OMAR ADDI  
ADGIFT COMPANY  
ADVANCED RESTAURANT EQUIPMENT, INC.  
AHD VINTNERS  
AIR HANDLERS SERVICE CORP.  
AL BOURDEAU INSURANCE SERVICE, INC.  
RONALD & LEA ALLISON  
AMERICAN LASER CENTERS  
MELISSA L. AMIN  
AMWAY GRAND PLAZA HOTEL  
ANEW THERAPEUTIC MASSAGE  
EDUARD & JANET ARSZNOV  
ART-IS-IN MARKET  
LUTRICIA ASHBURN  
ASSOCIATED RISK MANAGEMENT  
RICHARD F. ASZTALOS  
MARK S. ATTARD  
KEITH AUGUSTINE  
CHARLES W. AVIS  
STUART C. BAKER  
DAVID & LINDA BALFOUR  
WAIL BAMIEH  
PATRICIA D. BARBER  
BETTY J. BARBOUR  
MICHELLE Y. BARIE  
MARK BARSAMIAN  
JOHN E. BARTEK  
KEVIN J. BATES  
THEODOSIA W. BEADLE  
JERRY BEASLEY  
MARY H. BEAUDOIN  
LUDGER A. BEAUVAIS  
TOM BEAVER  
BECHARAS BROTHERS COFFEE COMPANY, INC.  
PATRICK J. BEECHER  
SHANNON BEGOSA  
BEHRMANN PRINTING CO., INC.  
BELL AUTOMATION  
KENNETH & BARBARA BELLAIRE  
CYNTHIA BELLANTE  
L. M. BEMISH  
ROBERT D. BENNETT

BENNIGAN'S GRILL AND TAVERN, PLYMOUTH  
BENNY EVOLA & SON  
JULIA BERG  
GARY BERMAN  
BIRWOOD CLEANERS/CADILLAC CURTAIN CLEANERS  
BLACK FOREST WILDERNESS VALLEY GOLF COURSE  
BLACK STAR FARMS  
BLACKWELL FORD  
CHRISTINE BLAIR  
BETH BLANKERTS  
BOB & CAROL BLAZIC  
DOROTHY E. BLOOM  
BLUE CROSS BLUE SHIELD  
RUSSELL S. BOGARIN  
PAUL & JOYCE BOHLANDER  
PATRICIA K. BOISSEAU  
RUSS BOLLINGER  
APRIL D. BONNER  
THOMAS D. BOOTH  
JAMES & SUSAN BORON  
BOTSFORD GENERAL HOSPITAL  
EILEEN BOUCHARD  
BOZZO'S LIMOUSINE SERVICE  
MAURICE & MARY BREEN  
WILLIAM A. BREGER  
JULIE BREITENBACH  
DON BRIDENSTINE  
RACHEL BROADBENT  
BRIAN & DONNA BRODERICK  
CHARLES E. BROOKS  
DAVID BROSE  
BERNICE A. BROWN  
NATHAN & KATHY BROWN  
MICHAEL S. BROZ  
GISSELLE BUCHANAN  
JOHN R. BURNELL  
NICKOLAS A. BUTKEVICH  
BY THE BOTTLE  
VALERIE BYRD  
SUZANNE K. CACHAT  
CADILLAC COFFEE COMPANY  
BILL CALLAHAN  
CAMBRIDGE FINANCIAL SERVICES  
CANTON COMPUTERS  
CAPITAL INSURANCE GROUP  
CARDWELL FLORIST  
CARL'S GOLFLAND  
DON C. CARTER  
CASINO WINDSOR  
CATTAILS GOLF CLUB  
CAVISTON AGENCY, INC.  
CENTRAL PARK ESTATES  
CERTIFIED INVESTIGATIONS INTERNATIONAL  
CHELSEA CENTER TOURIST HOME  
LINDA K. CHERRO  
CHICAGO VENDOR SUPPLY  
CITY OF LIVONIA  
CLAYWORKS  
FLORENCE E. COBB  
CAMILLE L. COLATOSTI  
RUSSELL J. COLLINS

THE COMMON GRILL  
SHARON COMMON  
DETROIT LIONS COMMUNITY AFFAIRS  
COMMUNITY BANK OF DEARBORN  
COMMUNITY FINANCIAL  
COMPTOOL SOLUTIONS, LLC  
JOHN M. CONNOR  
CAROLYN COOPER  
CO-ORDINATED SERVICES, INC.  
CORE CONCRETE CONSTRUCTION, INC.  
MANELBERT E. COUNTS  
JAMES M. CRAVER  
ELAINE CRAWFORD  
CRYSTAL MOUNTAIN  
BERNADETTE M. CUNDIFF  
GARY CUNDO  
D & C FINANCIAL CORP.  
JAMES R. DALES  
STEWART W. DAMON  
DEMATTIA GROUP  
HELEN DEMBICKI  
DETROIT DOWNTOWN COURTYARD BY MARRIOTT  
DETROIT MARRIOTT AT THE RENAISSANCE CENTER  
HELEN DIMITRIOU  
RENEE DIPIONIO  
DIRECT LENDING  
BEATRICE DIVITO  
DANTE DIVITTO  
SHIRLEY A. DIXON  
JOHN & DOROTHY DLUSKI  
JANE J. DOMZALSKI  
DON MASSEY CADILLAC  
CAITLYN DOYLE  
PAT DOYLE  
THOMAS J. DOYLE  
CAROL DUBUQUE  
BRENDA M. DURLING  
ROBERTA DURRANT  
E & E MANUFACTURING CO., INC.  
JOSEPH & MARGARET EDMUNDS  
JOHN ELKINS  
FREDERICK L. ELLICOTT  
MIDGE B. ELLIS  
TIMOTHY D. ELLIS  
ELROD BENEFIT STRATEGIES, INC.  
EMBASSY SUITES HOTEL-DETROIT-LIVONIA  
JACK ENGBRETSON  
ALLAN ESTES  
ETKIN EQUITIES  
JAMES FAHRENKOPF  
NANCY FAIR  
FAIRWAY PACKING CO.  
FARMLAND BLUEBIRD DISTRIBUTORS  
WILLIAM FALST  
FERNON P. FEENSTRA  
MARY FELTZ  
HARVEY & SUZANNE FERGLISON  
CATHERINE M. FERMAN  
JEROME I. FINKELSTEIN  
FITNESS THINGS, INC.  
GEORGE FLEES

HEATHER M. FLYNN  
 DIANE E. FLYNN-HAHN  
 FOCAL POINT STUDIO  
 MAUREEN FORAN  
 SEAN FORRESTER  
 FOURSIGHT CREATIVE GROUP, INC.  
 HARVEY FOX  
 FOX HILLS COUNTRY CLUB  
 KENNETH & LISA FOX  
 SIDNEY FOX  
 GEORGE & MAIGA FRIESS  
 FRITO LAY  
 G. W. V. BUREN CO.  
 JEFFREY M. GABRIEL  
 GARY GAGNON  
 GARDEN FOOD DISTRIBUTOR, INC.  
 GARDENVIEWS, INC.  
 GARGARO CONSTRUCTION CO., INC.  
 CHRISTINE GARRETT  
 GARY L. FIGURSKI PC, CPA  
 JOHN & SANDRA GELMISI  
 GEM & CENTURY THEATRES & CENTURY GRILLE  
 GENERAL FASTENERS CO.  
 GEORGE MATICK CHEVROLET, INC.  
 PATRICK M. GERAGHTY  
 SUSAN GERISH  
 LINDA K. GILLMAN  
 JANINE R. GILLOW  
 PAUL C. GINGELL  
 ROBERT J. GIRARD  
 PAM GIROUX  
 WAYNE R. GLASS  
 GLENHURST GOLF COURSE  
 JOHN C. GODDARD  
 GOLDSMITH GALLERIES  
 ALBANO GONCALVES  
 SAMUEL GOODEN  
 HANK GORANSON  
 ALLAN GOUGH  
 ALICIA GRAY  
 GREATER DETROIT BUILDING TRADES COUNCIL  
 GREEKTOWN CASINO  
 DONALD GREEN  
 DONALD E. GREEN  
 JASON A. GREIFENBERG  
 DAVE GRIFFIN  
 HILARY & BEVERLY GROSS  
 HAROLD GROSSBART  
 JESSICA GUBING  
 BONNIE GUERRO  
 NICHOLAS P. & HILDA GUERRO  
 DENNIS GUGGER  
 GWEN FROSTIC PRINTS  
 HAGGERTY HOTEL ASSOCIATES, LLC  
 REGIS M. HALLISEY  
 BARBARA HAMLIN  
 JOHN HARKER  
 HARPER, FINLEY & ASSOCIATES, PC  
 HARRY J. WILL FUNERAL HOME  
 PETER HASENKAMP  
 THOMAS & CHERYL HAWKINS

JACKIE K. HEBEKEUSER  
 RICHARD & ANN HENNINGSEN  
 HENRY A. FOX SALES CO.  
 THE HENRY FORD  
 HILTON GARDEN INN-DETROIT DOWNTOWN  
 JOHN & DEBRA HILTZ  
 HINES PARK LINCOLN MERCURY  
 OTTO G. HINZMANN  
 WALTER O. HOFFMANN  
 HOLIDAY INN EXPRESS-MACKINAW CITY  
 CHERI L. HOLMAN  
 JOE HORN  
 ROBERT & KRISTIN HOY  
 FRANK HRLIC  
 JERRY HROMYKO  
 CATHERINE HUDAK  
 CHARLES HUEBNER  
 HUGGY BEAR CRUISES, INC.  
 KATHLEEN M. HULIK  
 WILLIAM H. HUPPENBAUER  
 HYATT REGENCY DEARBORN  
 J & M REPRODUCTION CORPORATION  
 J LEWIS COOPER CO.  
 J. M. J. PROPERTIES  
 JAN W. JACOBS  
 JANINA JACOBS  
 PAM JACOBS  
 SANDY JARVIS  
 JASMAN CONSTRUCTION, INC.  
 GARY JEFFERS  
 JOE'S PRODUCE  
 DEBBIE JOHNSON  
 FRANCES D. JOSWIAK  
 J-P PROPERTY MANAGEMENT, LLC  
 SURESH KANUMILLI  
 MARK P. KARCHON  
 KARNA CONSTRUCTION  
 THOMAS W. KATOFIASC  
 EDWARD A. KAVANAUGH  
 SANDRA J. KERR  
 KERRIGAN & CO., INC.  
 GENE KEYES  
 JOHN KIDD  
 BONNIE B. KING  
 JACK & PATRICIA KIRKSEY  
 KIM KLAFT  
 CYNTHIA L. KLOSS  
 KNOLLENBERG FOR CONGRESS COMMITTEE  
 ROBERT KOKOSZKA  
 MELVYN T. KOROBKIN  
 GEORGE P. KOROL  
 DOROTHY KOVACHICH  
 MICHAEL & DENISE KRAMER  
 JIM KRAVIS  
 THERESA H. KRAWCZYK  
 MARY E. KROBOCK  
 ROBERT KROCHMAL  
 KRUEGER INTERNATIONAL, INC.  
 L. MAWBY VINEYARDS  
 HOLLY J. LABO  
 CRAIG LAMBERT

JAMES LANDSBERG  
 JENNIFER LANGON  
 VIRGINIA L. LARKIN-KLEINERT  
 LAWRENCE TECHNOLOGICAL UNIVERSITY  
 LEE E. HOLLAND ASSOCIATES, PC  
 TIMOTHY D. LEMON  
 WILLIAM C. LENN  
 LEO SOAVE BUILDING, INC.  
 LEONE IMPORTS LIMITED, INC.  
 LEVAN DENTAL GROUP, PLC  
 JULIE LEVINE  
 GARY G. LEWANDOWSKI  
 LIFETIME INVESTMENT MANAGEMENT, LLC  
 KIMBERLY LINENGER-CAMPEAU  
 LINKS OF NOVI  
 LIVONIA AREA PIANO TEACHERS FORUM, INC.  
 LIVONIA CHAMBER COMMERCE  
 LIVONIA EMBASSY SUITES  
 HARRY & JOYCE LOEHNE  
 EDWARD A. LONIEWSKI  
 RICK LOPUS  
 BLAKE LORICK  
 KEVIN E. LOSEY  
 CLAUDETTE L. LOWE  
 ANN C. LUBERSKI  
 JEWEL M. LUCKETT  
 JOYCE C. LUDWIG  
 JOHN LYCHOS  
 MARJORIE S. LYNCH  
 JOHN & ANN MACDONALD  
 THOMAS MADDEN  
 GEORGE MAGRO & SHERRY ZYLKA  
 MAIN FINANCIAL GROUP, LLC  
 KATHY MALY  
 CLARE MARA  
 MARRIOTT DETROIT LIVONIA  
 CINDY H. MARSACK  
 MASTER CUT MACHINE & FAB., LLC  
 MARCIA MATTIELLO  
 LORNA M. MATTSON  
 BRIAN C. MAZUR  
 PHYLLIS V. MAZURE  
 ORIN & TINA MAZZONI  
 WAYNE L. MCBRIDE  
 KATHLEEN M. MCCARTHY  
 DENISE MCCORMICK  
 PRINCETTA MCDADE  
 DEBBIE McDONALD  
 McDONOUGH AND ASSOCIATES  
 MICHAEL & MARY MCGEE  
 MARY ELLEN MCGOUGH  
 KELLI J. MCGRAW  
 MCGUIRE'S RESORT  
 KATHRYN M. McMURRAY  
 CAROLINE H. McNUTT  
 DORIS A. MCPHERSON  
 BRIAN J. MEAKIN  
 GERARD J. MELLNICK  
 MENARD BUILDERS, INC.  
 NANCY MERKEL  
 MERRILL LYNCH  
 MICELI & OLDFIELD, INC.

MICHIGAN MERCHANDISERS, INC.  
 MICHIGAN ORTHOPEDIC SERVICES  
 MICROSOFT MATCHING GIFTS PROGRAM  
 JEANETTE MILLER  
 PAM MILLER  
 RACHELLE MIRANDA  
 SHELLY MONITZ  
 CARL MONROE  
 DIANE L. MONTAGANO  
 CAROL J. MOORE  
 JENNIFER MOORE  
 WALTER & VIRGINIA MOORE  
 KELLY MORAN  
 MARY B. MORAND  
 RITA R. MORANIEC  
 JOHN J. MORELLI  
 JOAN E. MORGAN  
 CHARLENE MORRIS  
 JOHN A. MULDER  
 KRIS A. MUNROE  
 DAVID MUZZATTI  
 N. A. MANS & SONS, INC.  
 TIMOTHY G. NASH  
 NATIONAL HOUSE INN  
 NEW HORIZONS COMPUTER LEARNING CENTERS  
 JIM NIEMI  
 JAMES C. NISSEN  
 BETTY NIXON  
 PATRICIA A. NIXON  
 DONNA J. NORDMAN  
 NORTHWOOD UNIVERSITY  
 NOVI RECONSTRUCTIVE DENTISTRY, PC  
 ROY A. NUFFER  
 GERALD & VIVIAN NYLAND  
 MICHAEL E. OAKES  
 OASIS GOLF CENTER  
 JAMES W. OCHS  
 JOHN P. O'CONNOR  
 THOMAS A. O'CONNOR  
 MARLENE A. ODEN  
 OGUINNS LAWN & LANDSCAPING, INC.  
 JAMES J. O'KELLY  
 JOANN M. OLDHAM  
 DIANN OLIVERIO  
 JEROL & KAREN OLSON  
 SARAH M. OLSON  
 GEORGE E. ONTKO  
 OPLUS ONE  
 ORCHARD, HILTZ & McCLIMENT, INC.  
 LAWRENCE & NANCY ORDOWSKI  
 NANCY C. ORDOWSKI  
 MICHAEL W. ORICK  
 JUDI ORLOWSKI  
 VALERIE A. ORTKRAS  
 MICHAEL & JILL O'SULLIVAN  
 LYNDA OUMEDIAN  
 ROBERT & CYNTHIA OXLEY  
 BILL PAFF  
 CARYN N. PARKER  
 PARKSIDE GALLERY  
 HOWARD PARSONS  
 PATRICIA A. PARTYKA

## SHAREHOLDER (LESS THAN \$99)

CRAIG PASTOR  
 ROBERT F. PEARCE  
 NICK PEONIS  
 PETER BASSO ASSOCIATES, INC.  
 PETE'S HEATING & COOLING, INC.  
 JAMES PETIX  
 SHARON PETRI  
 PHEASANT RUN GOLF CLUB  
 HENRY & LYNN PHILLIPS  
 PHOENIX THEATRES  
 PIANO BAR OF PLYMOUTH, INC.  
 LAWRENCE J. PIPER  
 PLANTE & MORAN, LLC  
 MICHELLE A. PLawecki  
 TERRY L. PLawecki  
 JACQUELINE PLUFF  
 MICHAEL POCHRON  
 DAVID P. POIRIER  
 BARTON L. POLOT  
 LINDA PORTER  
 POST, SMYTHE, LUTZ & ZIEL, LLP  
 POTBELLY SANDWICH WORKS  
 PURPLE ROSE THEATRE Co.  
 CARL PURSELL  
 Q HAIR STUDIO  
 QUISTECH, INC.  
 SHARON QUINN  
 R. J. R., INC.  
 RADISSON HOTEL LANSING  
 KEN M. RADTKE  
 RAFAL SPICE  
 STEPHEN C. RAGAN  
 LAVONDA G. RAMEY  
 MICHELLE F. RANDALL  
 JAMES A. RANSWEILER  
 RATTLESNAKE  
 KRISTEL RAY  
 JOAN M. REED  
 LOUIS A. REIBLING  
 REPUBLIC SERVICES OF MICHIGAN HAULING, LLC  
 AMY ReVoiR  
 MAURA REYNOLDS-TOPPER  
 KIM RHODABACK  
 NANCY J. RHODES REMICK  
 FRED RIBITS  
 FRANK & MERLE RICHMOND  
 CHESTER & MARGORY RICKER  
 CARL & BEVERLY RIEGAL  
 BERNIE ROBERTS  
 LINDA ROBIN  
 ROBISON DENTAL GROUP  
 ROBOT PRINTING COMMUNICATIONS  
 JOE ROMA  
 ROBERT J. ROMA  
 SANDRA A. RONEY-HAYS  
 ROSENBLUTH VACATIONS  
 JACKIE ROSSI  
 ROUMELL, LANGE & CHOLACK, PLC  
 DARLENE RUECHENMEISTER  
 DONALD & DONNA RYKTARSYK  
 S & D PACKING, LLC

S & S SERVICES  
 TONI WISNE SABINA  
 CHONG P. SACHS  
 SALEM F. SAMAAAN, PC  
 SALON VALENTI  
 SAMIR W. MASHNI & ASSOCIATES, PC  
 JOHN & ELIZABETH SANTEIL  
 SUSAN E. SATHER  
 SAVERINO & ASSOCIATES, INC.  
 NANCY SCAPPATICCI  
 MARCIA L. SCARBROUGH  
 DONNA J. SCHAIDT  
 JODY E. SCHELLER  
 SCHMITT SOHNE  
 SCHOOLCRAFT COLLEGE-DEAN OF PROGRAM  
 DEVELOPMENT & DESIGN  
 SCHOOLCRAFT COLLEGE-COUNSELING CENTER  
 SCHOOLCRAFT COLLEGE-ENROLLMENT MANAGEMENT  
 SCHOOLCRAFT COLLEGE-FACULTY FORUM  
 EDWIN & DIANE SCHULZ  
 RANDY K. SCHWARTZ  
 DAVID K. SCOTT  
 MARY SHAHAN  
 WILLIAM B. SHANNON  
 JEAN SHAUGHNESSY-SMITH  
 SHAW CONSTRUCTION & MANAGEMENT Co.  
 SHELDON SUPPLY COMPANY  
 JODI SHEVIN  
 STEVE SHIVINSKY  
 SHORTT FAMILY LIVING TRUST  
 SHOWROOM OF ELEGANCE  
 IDA C. SIMMONS-SHORT  
 ARLENE M. SIMONS  
 REGINA SIMONE  
 JOHN & COLETTE SIRHAL  
 SKY GENIUS-METTETAL AIRPORT  
 JOSEPH & MARGARET SLEZAK  
 LINDA SMITH  
 SMOKERS HUB  
 JOSEPH XUJEREB & MARTHA M. SNOW  
 DEBBI SPENCER  
 THE INN AT ST JOHN'S  
 STANTE EXCAVATING Co, INC.  
 STARFIRE INVESTMENT ADVISORS  
 WALTER & BERNADETTE STEFFKE  
 CHRIS STEINBERG  
 MARY LOUISE STEKETEE  
 ALICE M. STEWART  
 E. ROB & STACEY STIRTON  
 DIANE STOCKER-BENDERSKY  
 ROBERT & JUDITH STONE  
 STONEBRIDGE GOLF CLUB  
 MARILYN STREET  
 AILEEN STROEBEL  
 STUDIO 427-REGINA ABRAHAM GALLERY  
 DEVERE & ZITA STURM  
 KEVIN N. SUMMERS  
 RAY SUTHERLAND  
 STEPHEN SWARTZ  
 BRUCE W. SWEET, JR.  
 TIM SWEET

KIN L. TANG  
 TASTE OF HOME ENTERTAINING  
 JUJUAN C. TAYLOR  
 TENNYSON CHEVROLET  
 ALEXANDER THOMSON  
 THOMSON'S AUTO POLISHING, INC.  
 THOMAS & MARLENE TIPI  
 GEORGE TOLOFF  
 RICHARD & ELAINE TOMALTY  
 JOHN & CAROLYN TOMEY  
 GARY L. TOMPKINS  
 LESTER TOOMAN  
 THOMAS E. TOPPER  
 TOWER PINKSTER TITUS  
 DARRYL TREMBATH  
 TRINITY HEALTH PLANS  
 JEFFREY TRIPOLI  
 PAUL & SHARON TURNAGE  
 PAT TYNAN  
 ULTRA MARKETING  
 V SALON  
 JASON & ELIZABETH VALENTE  
 RENEE VASIOFF  
 DEBORAH S. VENDITTELLI  
 VESCO OIL CORPORATION  
 VICTORY HONDA OF PLYMOUTH  
 VINE2WINE CUSTOM WINERY OF NORTHVILLE  
 VISTAR VSA  
 VIVIANO WINE IMPORTS  
 LEE VOGELSONG  
 FLORENCE VON GLAHN  
 LYNN M. WALLEN  
 WALTER'S HOME APPLIANCE  
 BARBARA L. WATSON  
 PATRICIA J. WATSON  
 CAROLYN H. WATSON-AUKEE  
 WDFN SPORTS RADIO  
 WEINER & RANDALL LAW GROUP, PLC  
 RICHARD J. WEINKALF  
 WESTMONT HOSPITALITY GROUP  
 ROBERT & SANDRA WESTPHAL  
 JOHN & LISA WEYER  
 CHARLES W. WIEGEL  
 MARY A. WIEGEL  
 ROBERT A. WIELECHOWSKI  
 SOOK WILKINSON  
 BARBARA WILSON  
 GORDON L. WILSON  
 MATTHEW W. WILSON  
 DANIEL J. WILTRAKIS  
 WINE DIMENSIONS GENERAL ACCOUNT  
 STEPHEN A. WRUBLE  
 CHERYL WRONE-GODDARD  
 DONALD G. YEE  
 KRISTEN M. ZANETTI  
 LOUIS A. ZANETTI  
 ZINGERMAN'S BAKEHOUSE  
 VINCENT A. ZUELLIG

1999 TAVERN  
 7-ELEVEN, INC.  
 ALEXANDER'S CUSTOM CLOTHIERS  
 WANDA M. ALTESE  
 ANNMARIE ALTOMARE  
 SANDRA AMMONS  
 ANDIAMO  
 MARY U. ANDREW  
 SUZANNE W. ANTISDEL  
 ROSE APPLE-BAILEY  
 DOMINIC A. AQUILA  
 ARCHIE'S RESTAURANT  
 BACK HOME BAKERY  
 LYNDA L. BANCROFT  
 VERLON BARRETT  
 CAROLE A. BAUER  
 BAVARIAN INN  
 AMY E. BECK  
 DONALD E. BEHRENS  
 BELLACINO'S PIZZA & GRINDERS  
 THERESA L. BENACQUISTO  
 JANET D. BENNETT  
 DAVID J. BERNARD  
 ALLEN BOBROFF  
 EDWARD & EILEEN BOLCER  
 BONEFISH GRILL  
 BENT & RENEE BOVING  
 ROBERT & MARILYN BOYCE  
 BRANN'S STEAKHOUSE & GRILLE  
 DARRYLE W. BRAXTON  
 CHRISTIAN BRECKNER  
 SUSAN BRESLER  
 LOUIE J. BROCCARDO  
 JEREMIAH D. BURNS  
 JOYCE L. BURRELL  
 KEITH D. BURTON  
 BUSHWOOD GOLF CLUB  
 C. A. FORTUNE AND Co.  
 CADDY SHACK  
 CAROL A. CALAHAN  
 CURTIS CALLEN  
 JAMES CAMERON  
 REGINA M. CAMILLERI  
 RICHARD H. CAMPEALI  
 CANTON MASSAGE  
 CAPERS STEAKHOUSE  
 CAROLINA INDUSTRIAL EQUIPMENT, INC.  
 DEBORAH M. CEBULSKI  
 CHAMPPS ENTERTAINMENT, INC.  
 JENNIFER A. CHANCE  
 SAROLINA S. CHANG  
 JEANNINE M. CHAPMAN  
 CHAPTER AI PEO SISTERHOOD  
 CHARISMA SALON & DAY SPA  
 MENKA CHERRO  
 CITY OF LIVONIA-GOLF DIVISION  
 CLADDAGH IRISH PUB  
 REBECCA S. CLEVENER

COFFEE EXPRESS COMPANY  
 BARRY J. COFFIELD  
 COLD STONE CREAMERY  
 DAVID & SHIRLEY CONNORS  
 JULIE CONNOYOR  
 JOE CONSIGLIO  
 ROBERT COSTANZA  
 COSTCO WHOLESALE-LIVONIA II  
 CRABILL & COMPANY  
 JUDY CRAWFORD  
 PRISCILLA R. CRONIN  
 PEGGY J. CURTIS  
 DEADWOOD BAR & GRILL  
 CAROL L. DERR  
 DETROIT OPERA HOUSE  
 DETROIT PRINCESS RIVERBOAT  
 DETROIT RED WINGS  
 DIAMOND JACK'S RIVER TOURS  
 GEORGE E. DIAZ  
 CHRISTINE N. DOMINO  
 DONNA J. DOYLE  
 GOE DROVIN  
 COLLEEN ENGELBRECHT  
 TERESA ENGLISH  
 GERALD C. ESKER  
 MICHAEL E. ETTENHOFFER  
 DONALD & LORRAINE FABRY  
 PATRICK C. FARR  
 EUGENE & DOROTHY FERRARI  
 SANDRA A. FISHER  
 FRAME WORKS  
 DEAN A. FRANCHI  
 JOHN T. FRED  
 FREDERICK MEIJER GARDENS & SCULPTURE PARK  
 FRENCH LAUNDRY  
 KARLA W. FRENTZOS  
 DAVID G. GAEBEL  
 JOYCE L. GALINDO  
 FRED & JOAN GEBHARDT  
 GENITTI'S  
 PAMELA M. GEPPERT  
 MARY GERLACH  
 GET WINE, LLC  
 JAMES N. GILHAM  
 GINA AGOSTA, INC.  
 JUDITH GINSBERG  
 ANGE D. GIROLAMO  
 THOMAS C. GODDARD  
 GOLDEN GIFTS  
 ERNESTINE GOLDSTUCKER  
 ROBERT GORDON  
 CHARLES W. GOSSETT  
 GARY GRACA  
 ELIZABETH A. GRACE  
 GAIL S. GRADY  
 GREAT CLIPS-COLLEGE PARK  
 GREAT INDOORS  
 TERRY C. GREEN  
 CYNTHIA L. GRESENS  
 MARTIN GRIFFIN  
 DONNA HAGG

JEREMY L. HALL  
 DAVID S. HAMBURGER  
 HARPER UNIVERSITY HOSPITAL-CRM DEPT.  
 CONSTANCE HAYNES  
 EMIL HEINZ  
 HELEN'S UPTOWN CAFE  
 HERRIMAN & ASSOCIATES  
 JANETTE M. HICKS-HILL  
 HILTON GARDEN INN-PLYMOUTH  
 ROBERT L. HOLMES  
 H. M. HORTON  
 JOHN M. HORVATH  
 GLORIA HULL  
 MARJORIE M. HULL  
 DONNA HYLTON  
 LINDA IBRAHIM  
 IV SEASONS FLOWERS  
 D. L. IZZO  
 J. ALEXANDER'S RESTAURANT  
 MELANIE JACKSON  
 DAWN JOHNSON  
 DON C. JOHNSON  
 FRED JOHNSON  
 C. M. JONES  
 LAURA S. JULIER  
 RUSSELL JULIETTE  
 RICHARD P. KARCH  
 ROBERT & MARY KELLER  
 ELIZABETH KESLACY  
 TRISHIA R. KIRKLAND  
 CATHERINE A. KIURSKI  
 ROSEMARY E. KNAPP  
 JOSEPH K. KNOLLENBERG  
 KIRA KOCISZEWSKI  
 PAMELA A. KOSTEVA  
 PHYLLIS D. KRAMER  
 EUGENE O. KRECH  
 EDWARD KUBICZEK  
 SHEILA A. KURLAND  
 LAURIE A. KUZNIA  
 STEVEN M. LAKIN  
 ALLAN J. LASSER  
 LAUREL PARK PLACE  
 LISA LAZAREVICH  
 MARIE P. LEE  
 BETTY J. LESHOK  
 JOHN S. LESKO  
 A. L. LINDSAY  
 DONNA LOBER  
 LOTUS ARTS GALLERY  
 CHARLES E. LOWE  
 RONALD W. LOWE  
 SANDRA M. LUCAS  
 JANE M. LURAIN-WOLFE  
 M.R.S. SALES & SERVICE CORP  
 MACKINAC ISLAND CARRAIGE TOURS  
 MAGGIEMOO'S ICE CREAM AND TREATERY  
 MAID D'JUOR  
 JOSEPH A. MAISANO  
 LISA MALBURG  
 ELIZABETH A. MALCHO

KAREN MALINOWSKI  
 RUTHIE J. MAPLES  
 MARY A. MARINI  
 TERRY MARR  
 MATT MARTELLO  
 DOROTHY McALLEN  
 PAUL W. McDONOUGH  
 MIKE MCKINNIE  
 GEORGE & CHERYL MEEHAN  
 BEN A. MILLER  
 JOYCE A. MILLER  
 SHARON P. MITCHELL  
 MITCHELL'S FISH MARKET  
 MODERN BUILDING CORP.  
 MOOSE RIDGE GOLF COURSE  
 ROBERT & MARJORIE NELSON  
 NOODLES & COMPANY  
 NORTHVILLE CANDLE & GIFTS  
 MICHAEL O'BRIEN  
 JAMES G. OTTO  
 P. F. CHANG'S  
 P.Y. STIX  
 PANCHERO'S MEXICAN GRILL  
 MARIANNE PEPPER  
 ANNA G. PEROSKY-SIELOFF  
 MAUREEN PERRI  
 LARRY PERRY  
 SALLY A. PETERSEN  
 RICHARD PETRUCCELLI  
 DIANE PICHAN  
 MARY JO PILAT  
 PLYMOUTH CARPET SERVICE, INC.  
 JAMES R. POLKOWSKI  
 STEPHEN POMPO  
 JACK G. PONDER  
 PAMELA PONDER  
 JOANNE PRKAPAS  
 NANCY A. PREECE  
 MALCOLM PRYOR  
 RICHARD & JAN RAISON  
 JEFFREY RANCK  
 WILLIAM H. RECTOR  
 LARRY W. REDDY  
 THOMAS J. RHOADES  
 JAMES RICKEL  
 ROBERT M. ROCK  
 ROCKY PEANUT CO., INC.  
 ROCKY'S OF NORTHVILLE  
 ROSE'S RESTAURANT  
 ANDREA RUGE  
 DAVID H. RYDZEWSKI  
 JOHN M. SAMSONOW  
 PETER J. SANTEIU  
 ANNE E. SCHAEFFER  
 SCHAKOLAD CHOCOLATE FACTORY  
 SCHOOLCRAFT COLLEGE-BOOKSTORE  
 SCHOOLCRAFT COLLEGE-BUSINESS &  
 TECHNOLOGY DIVISION  
 SCHOOLCRAFT COLLEGE-THEATRE DEPARTMENT  
 SCHULER'S RESTAURANT & PUB  
 CAROL SEALS

MARTIN F. SEITZ  
 PATRICK & NANCY SHARP  
 SHEPLER'S FERRY  
 JILL SMITH  
 MARK SMITH  
 GAYLE SNIDER  
 PHYLLIS SPOULTZ  
 ELIZABETH STADLER  
 STAMPEDDLER PLUS MEMORIES  
 DOROTHY E. STANLEY  
 STARBUCKS  
 STEAK & ALE  
 GREGORY & JEANNE STEMPIEN  
 STOTSBERY TYPEWRITER SERVICE  
 JOANNA K. STRIZIC  
 CALVIN & CAROL STROM  
 RONALD STRONG  
 SUBURBAN REPUBLICAN WOMEN  
 PATRICK & JUANITA SUCHY  
 PATRICK B. SULLIVAN, SR.  
 PATRICIA SUSA-COTTAGE  
 SUSANNA M. SYMINGTON  
 RICHARD C. TALBOT  
 DAVID C. THOMAS  
 THOMSON LEARNING CAREER &  
 PROFESSIONAL GROUP  
 FRANCES TONEY  
 TRADER JOE'S  
 NANCY TREMBERTH  
 LYNETTE M. TROJNIAK  
 DANIEL L. TUNNECLIFFE  
 DORIS VAN ALLEN  
 SUZANNE VAN APPELDORN  
 DENNIS J. VANNI  
 MARY VERLINICH  
 SYLVIA D. VUKMIROVICH  
 WILLIAM F. WAGNER  
 ROBERT J. WEBBER  
 BEATRICE WEERTZ  
 BARBARA J. WEISKOPF  
 WESTBORN MARKET  
 ANITA WHITE  
 JOHN & DORIS WILSON  
 PAUL WILSON  
 RUBY WILSON  
 NICOLE L. WILSON-FENNELL  
 DAVID A. WIRTH  
 JOHN & DOROTHY WITTEN  
 ANTOINETTE V. WOZNIK  
 MARK H. YESSIAN  
 HOWARD & ROBERTA YOUNG  
 ZUMBA MEXICAN GRILLE

## Board of Trustees

Gregory J. Stempien, J.D.  
CHAIR

Brian D. Broderick, J.D.  
VICE CHAIR

Carol M. Strom  
SECRETARY

Patricia Watson, Ph.D.  
TREASURER

Mary Breen  
MEMBER

Philip N. Cascade, M.D.  
MEMBER

Joan A. Gebhardt  
MEMBER

Conway A. Jeffress, Ph.D.  
PRESIDENT

## Schoolcraft Development Authority

Jill F. O'Sullivan  
PRESIDENT

Robert R. Nix II, J.D.  
VICE PRESIDENT

James R. Polkowski  
SECRETARY/TREASURER

Barbara Scharmen  
RECORDING SECRETARY

Philip N. Cascade, M.D.  
Patricia Watson, Ph.D.  
SC BOARD OF TRUSTEES

BOARD MEMBERS  
William Brunton  
James B. McKeon  
The Hon. Lita Masini Popke  
John J. Walsh, J.D.

EX-OFFICIO  
Conway A. Jeffress, Ph.D.

## Foundation Board of Governors

Edwin Schulz  
PRESIDENT

John Bowen  
PRESIDENT ELECT

Abe Munfakh  
VICE PRESIDENT

Martha Snow  
SECRETARY

Ray Friedrich  
TREASURER

BOARD MEMBERS

John Allie  
James Bardy  
Craig Bowles  
John Elkins  
Robert Farris  
James Fausone  
Guy Gehlert  
David Grossman  
Mary Ellen King  
Elaine Koons  
Terri O'Brien  
Michelle Plawecki  
Michael Polsinelli  
Rodger Wojcek  
John Weyer  
Mark Wilkie

HONORARY MEMBER  
John N. Santeiu, Jr.

EX-OFFICIO  
Mary Breen  
Conway Jeffress, Ph.D.  
John J. Walsh, J.D.

