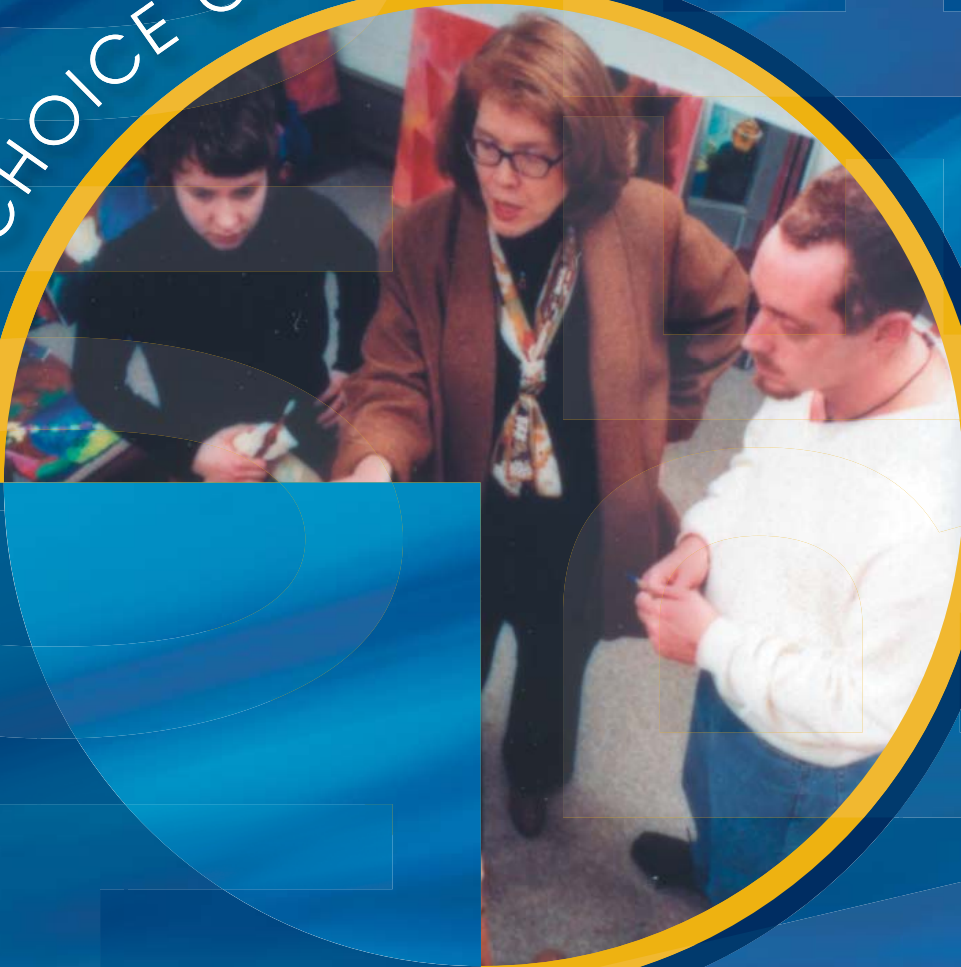


FOR A CHOICE CAREER



DISCOVER WORKING AT SCHOOLCRAFT COLLEGE

Discover Our College

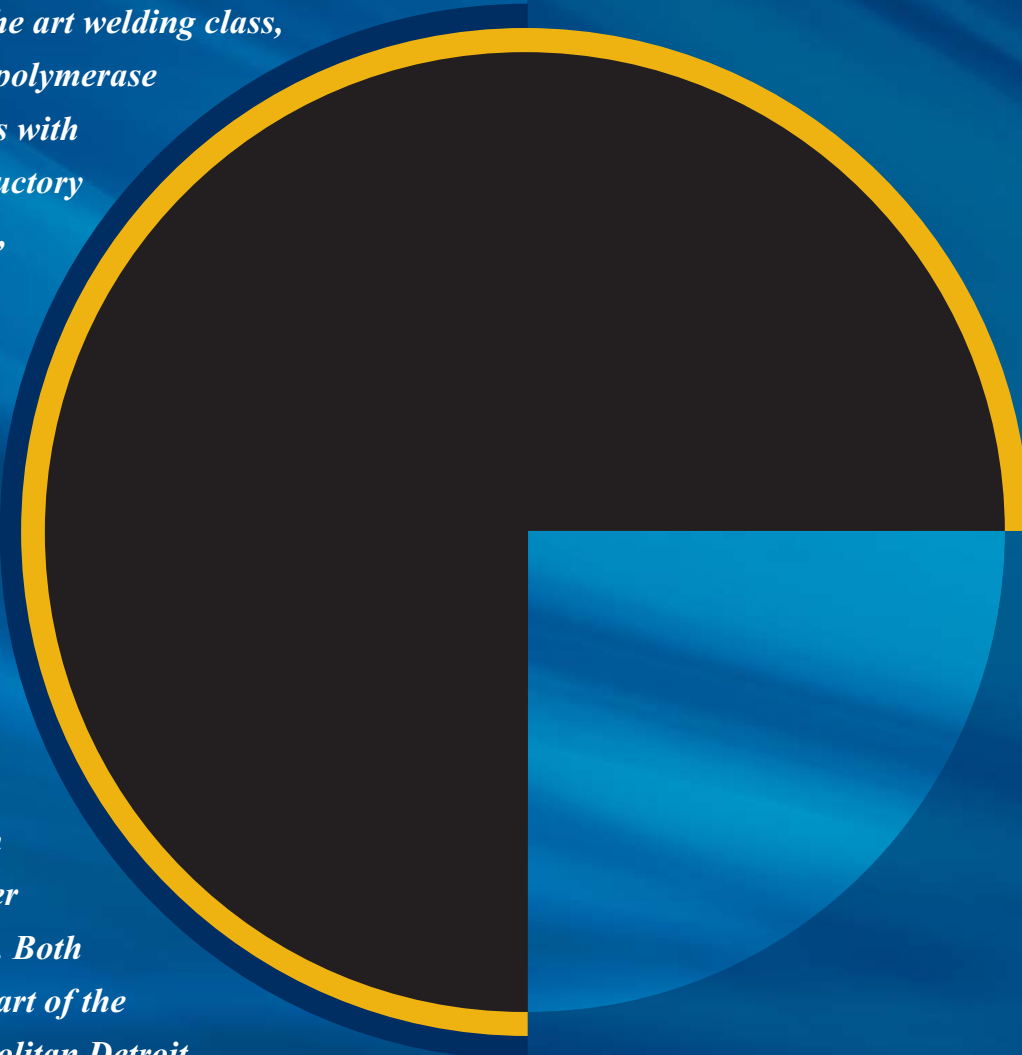
Schoolcraft College has the look and feel and many of the characteristics of a small liberal arts college. As a community college, our focus is on student learning and achievement, and we provide the physical tools and developmental support to keep that focus as our primary goal.

Our programs are cutting edge, from creating steel roses in the art welding class, to performing polymerase chain reactions with DNA in introductory biology classes, to producing computer animations for films and games.

We are a commuter campus, located in Livonia, Michigan, with a satellite center in Garden City. Both locations are part of the greater metropolitan Detroit area. A series of nearby freeways gives students and staff easy access to campus.

As a two-year college, our students are divided almost evenly between those who go on to a four-year university and those who join the work force upon graduation.

We are fully accredited by The Higher Learning Commission of the North Central Association.



Discover
Our Commitment



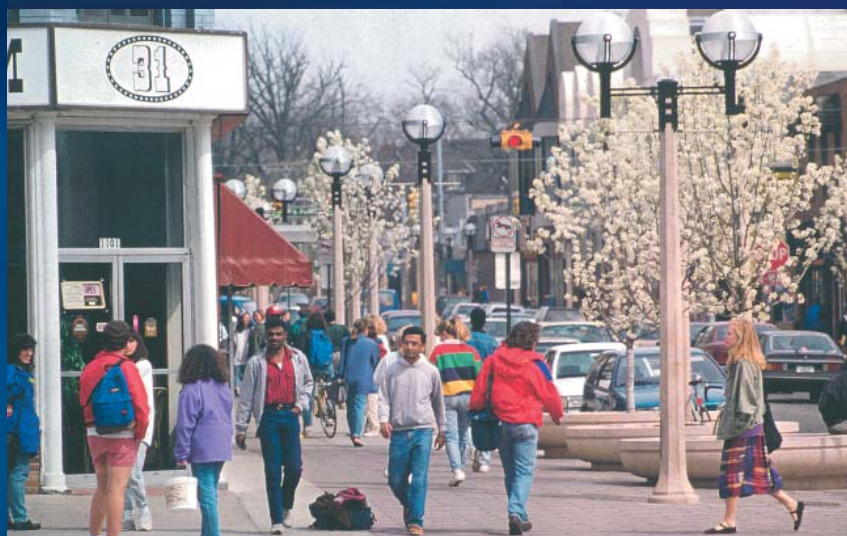
Discover
Our
Campus

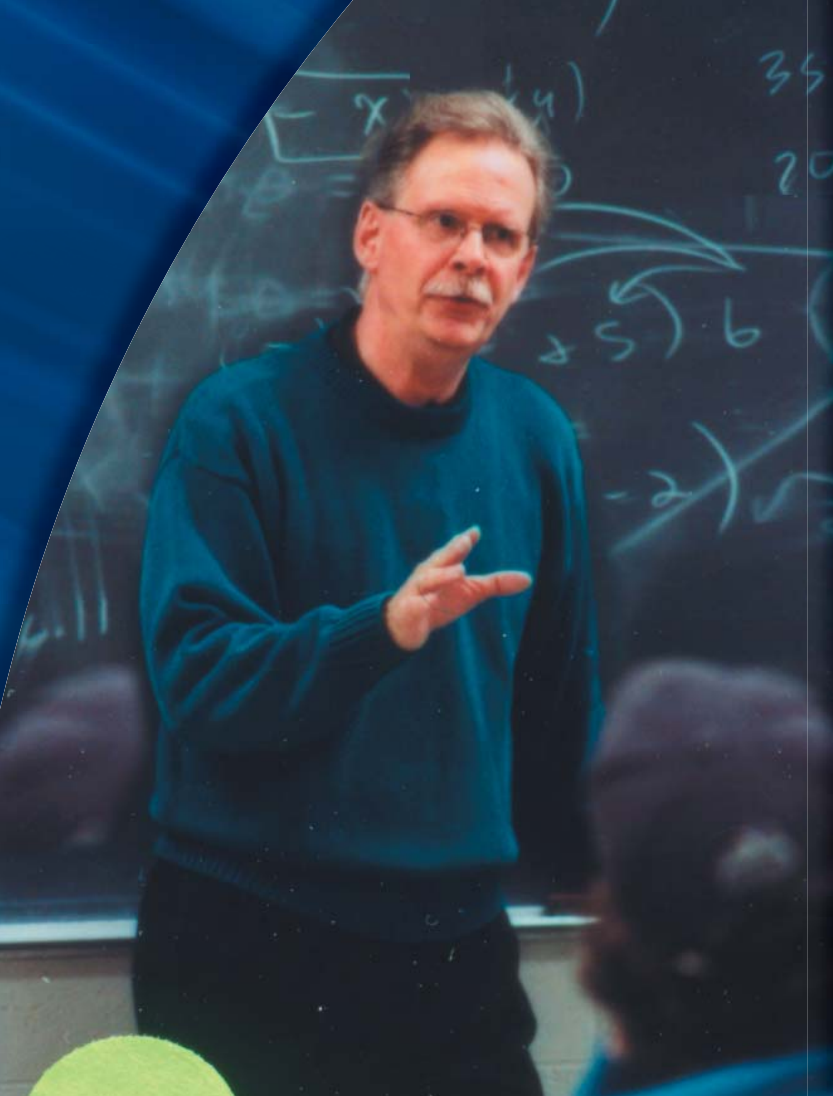


Discover
Our
Culture



Discover Our
Community





2

At Schoolcraft College, effective instruction is our main focus. Scenes from mathematics, English, chemistry, anthropology and communication classes illustrate the intensity and personal involvement of our faculty.

Discover Our Commitment

At Schoolcraft, we believe in making wise choices that give the college financial stability and our employees the latitude to do their jobs creatively.

As a consequence, there is a remarkable amount of loyalty to the college, and people choose to build a career here. In our 40-year history, we have had only four presidents, and often promote from within.

We seek employees who are eager to create, experiment, and not be afraid of taking risks. We place them in well equipped offices and classrooms. Each classroom has permanently installed computers, data projectors, Internet accessibility, and VCR

and DVD players. Some classrooms have document cameras, and no computer on campus is more than four years old.

An indication of our investment in the future is the transformation of our library into a 21st century collaborative learning space, also housing the Learning Assistance Center. The college has been aggressive in developing nontraditional streams of revenue, leading to financial stability. It was able to build two major buildings in the past decade, opening both debt-free.

Schoolcraft has a reputation for sound financial management, and is one of the few institutions that is debt-free and still able to offer a competitively priced education.



Discover Our Campus

In a recent survey of admitted students, Schoolcraft College earned higher ratings than competing two- and four-year colleges for offering an environment that stresses academic excellence.

Our classes are small, averaging a student-teacher ratio of 22 to 1.

We strive to give our students experience in real world settings, using the latest in technology and scholarship, while broadening their world view.

We offer traditional, online, open entry/open exit and hybrid classes. Students in several classes produce electronic portfolios as assessment tools.

Honors students may join Schoolcraft Scholars, completing six honors courses and 100 hours of service learning in the community.

Students participate in projects for a local river environmental group, travel to Europe, digitally compose music, learn about the body through dissecting a cadaver, and prepare marketing materials for local businesses.

Culinary Arts students operate their own restaurant, preparing and serving exquisite gourmet meals, while child care students work directly with young children in our Children's Center.



Schoolcraft students receive instruction in technology-rich classrooms, renovated labs, and some of the most advanced Culinary Arts instructional kitchens in the country. Free monthly noon concerts with world-class musicians, theater productions, lectures, book clubs and two scholarly journals enhance academics.

Discover Our Culture

Schoolcraft's 181-acre campus is a clean, attractive, safe environment for teaching and learning. The grounds include large parking areas, athletic fields, a pond and flower-bordered walks.

The faculty and staff participate in a number of regularly scheduled academic and social events.

New employees invariably mention the friendliness they encounter, and there is a high level of cooperation and peer support between faculty and staff.

Most faculty and staff members work in partnership with the Michigan Educational Association, the organization that represents four employee groups.

We offer an extremely competitive and comprehensive wage and benefits program to meet the needs of employees and their families. We participate in the Michigan Public School Employee Retirement System, one of the top-rated retirement and insurance packages in the country.

As a mark of our commitment to diversity and an international perspective, the entire campus focused on the Middle East for a year, with the goal that every class would find a way to present some material on the region. The next focus areas are Latin America and sub-Saharan Africa.

For members of our campus and larger community who have multiple barriers to getting a college education, we established a Women's Resource Center in 1974. It offers a full range of academic and support services, and has won a number of national awards for its work.

The campus is home to two professional journals. *The MacGuffin* is a national literary magazine;

the *Community College Enterprise* is a research journal exploring educational practices.

We encourage and support a variety of professional development activities.

The Music Club annually sponsors eight free noontime concerts, featuring world-class musicians, attended by both college personnel and community members. Our student theatre productions are sold out each semester.

Our Culinary Arts Department has national stature, including winning top honors in the country from the American Culinary Federation. Fine dining is available in the restaurant for lunch and dinner, and take-home items definitely will tempt you.



Discover Our Community

Livonia is in southeastern Michigan, part of the greater Detroit metropolitan area, with all the cultural, recreational and educational opportunities available in a large urban setting.

You can listen to jazz on Friday, go to the symphony on Saturday, and be sailing the pristine waters of the Great Lakes on Sunday. The state of Michigan, by the way, has 3,126 miles of Great Lakes shoreline, more fresh water coastline than any other state.

If watching sports is your passion, you can follow professional baseball, football, basketball and hockey teams. Or you might enjoy the excitement of college teams vying

for national honors. Venues for all these games are a 45-minute drive from Livonia.

Detroit has been selected as host city for the Major League Baseball All-Star Game, the Super Bowl and the NCAA Final Four tournament.

The possibilities for outdoor activities abound. Michigan has more than 11,000 inland lakes and more than 36,000 miles of streams. You are never more than six miles from one of them, and the natural areas are great for hikers.

Enjoy the miles of Michigan beaches in the summer and skiing or snowmobiling in the winter.

6

Schoolcraft is at the center of the Detroit-Ann Arbor axis, with the famous Diego Rivera frescoes on the walls of the Detroit Institute of Arts, summertime al fresco dining in Ann Arbor, the new downtown Detroit landmark, Campus Martius, and unlimited recreation opportunities on the Great Lakes.



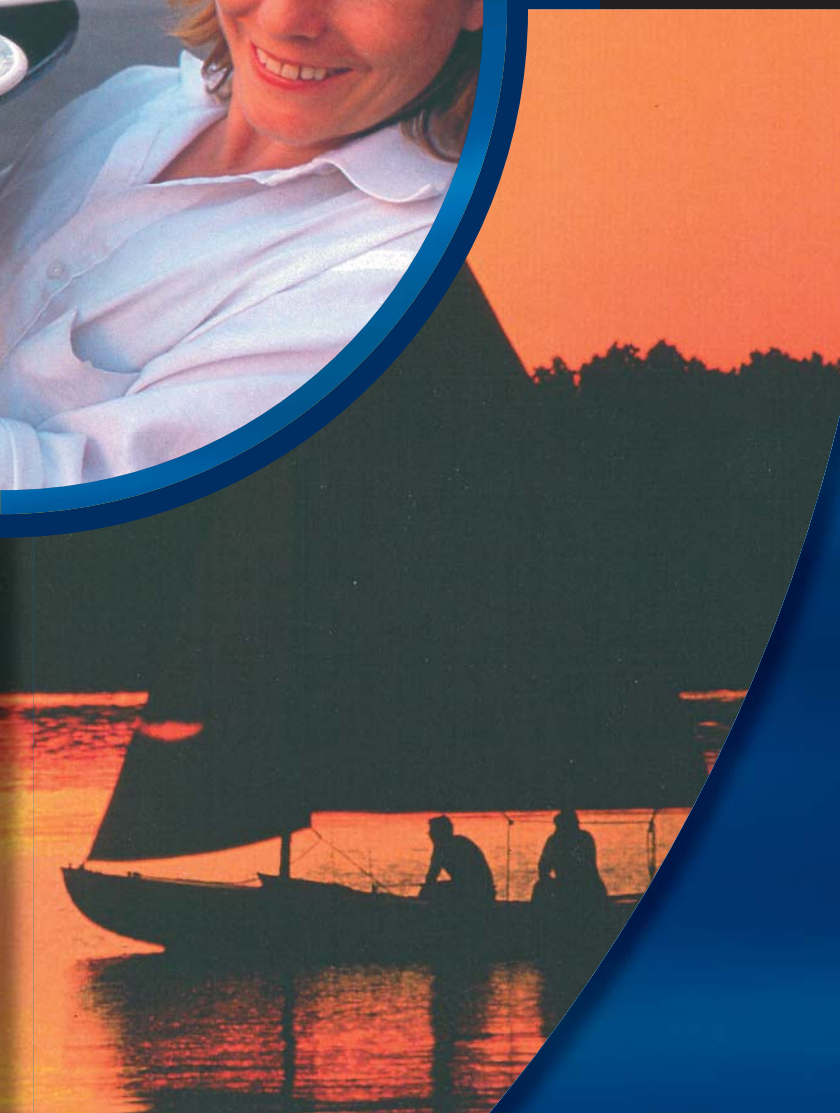
Area academic institutions are varied and plentiful. They offer opportunities for additional instruction or employment for a family member or a spouse. Colleges and universities include the University of Michigan, Eastern Michigan University, Wayne State University, the University of Detroit-Mercy, Oakland University and Lawrence Technological University, and six community colleges.

The exciting college town of Ann Arbor, home to the University of Michigan, has been called second only to Cambridge, Massachusetts, as the best college town in the nation. Enjoy Wolverine football, summer al fresco dining

on Main Street, or a great deli sandwich at Zingerman's. Be one of the 500,000 who visit the city for the Ann Arbor Art Fair each July.

For fine arts, the major venues include the Detroit Institute of Arts, the Michigan Opera Theatre, the Detroit Symphony, and theaters including the Fisher Theatre, the Fox and the Masonic Temple.

The home of Motown and Techno, Detroit and its suburbs boast many clubs, fine dining, quaint villages and riverfront condos. The Detroit Metro Airport, with its superb new terminal, is a hub city for Northwest Airlines and a gateway to the world.





8

Schoolcraft's suburban campus is the setting for many community events, and offers ultra modern conference facilities in the new VisTaTech Center.

Discover Our College

Schoolcraft and its surrounding community are profoundly linked and mutually supportive.

Each year the college hosts events ranging from a state jazz festival to a regional writers' conference to a high school welding competition. During the past 20 years, our Business Development Center has helped local business win government contracts worth \$1 billion.

Businesses and individuals are generous supporters of the Schoolcraft College Foundation. Foundation funds are used for student scholarships and to help faculty develop new teaching initiatives.





Board of Trustees

Mary Breen
CHAIRPERSON

Gregory J. Stempien
VICE CHAIRPERSON

Brian D. Broderick
SECRETARY

Patricia Watson
TREASURER

Philip N. Cascade
TRUSTEE

Kevin McNamara
TRUSTEE

Carol M. Strom
TRUSTEE

Conway A. Jeffress
PRESIDENT



18600 Haggerty Road
Livonia, MI 48152-2696
734-462-4400
www.schoolcraft.edu



Find our current list of job openings at

www.schoolcraft.edu

Apply online at

www.schoolcraft.edu/jobs/employment.asp

It is the policy of Schoolcraft College that no person shall, on the basis of race, color, national origin, gender, age, marital status, creed, or handicap, be excluded from participating in, be denied benefits of, or be subjected to discrimination during any program or activity, or in employment.

Photography by Phillip Dattilo